

## MRFAP1 Polyclonal Antibody

**Catalog No.** E-AB-63901

*Note:* Centrifuge before opening to ensure complete recovery of vial contents.

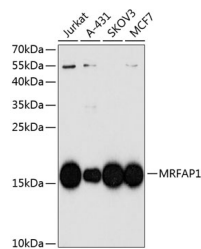
### Description

<b>Reactivity</b>	Human
<b>Immunogen</b>	Recombinant fusion protein of human MRFAP1 (NP_150638.1).
<b>Host</b>	Rabbit
<b>Isotype</b>	IgG
<b>Purification</b>	Affinity purification
<b>Conjugation</b>	Unconjugated
<b>Buffer</b>	PBS with 0.02% sodium azide, 50% glycerol, pH7.3.

### Applications Recommended Dilution

**WB** 1:200-1:1000

### Data



Western blot analysis of extracts of various cell lines using MRFAP1 Polyclonal Antibody at dilution of 1:1000.

**Observed Mw:14kDa**  
**Calculated Mw:14kDa**

### Preparation & Storage

**Storage** Store at -20°C. Avoid freeze / thaw cycles.

### Background

This gene encodes an intracellular protein that interacts with members of the MORF4/MRG (mortality factor on chromosome 4/MORF4 related gene) family and the tumor suppressor Rb (retinoblastoma protein.) The protein may play a role in senescence, cell growth and immortalization. Alternative splicing results in multiple transcript variants.

### For Research Use Only