

DDT Polyclonal Antibody

Catalog No. E-AB-63909

Note: Centrifuge before opening to ensure complete recovery of vial contents.

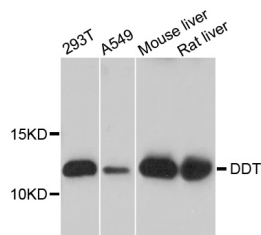
Description

Reactivity	Human,Mouse,Rat
Immunogen	Recombinant protein of human DDT
Host	Rabbit
Isotype	IgG
Purification	Affinity purification
Conjugation	Unconjugated
Buffer	PBS with 0.02% sodium azide and 50% glycerol pH 7.4.

Applications Recommended Dilution

WB 1:200-1:2000

Data



Western blot analysis of extracts of various cell lines
with DDT Polyclonal Antibody

Observed Mw:13kDa

Calculated Mw:11kDa/12kDa

Preparation & Storage

Storage Store at -20°C. Avoid freeze / thaw cycles.

Background

D-dopachrome tautomerase converts D-dopachrome into 5,6-dihydroxyindole. The DDT gene is related to the migration inhibitory factor (MIF) in terms of sequence, enzyme activity, and gene structure. DDT and MIF are closely linked on chromosome 22.

For Research Use Only