

## MYO18A Polyclonal Antibody

**Catalog No.** E-AB-63920

*Note:* Centrifuge before opening to ensure complete recovery of vial contents.

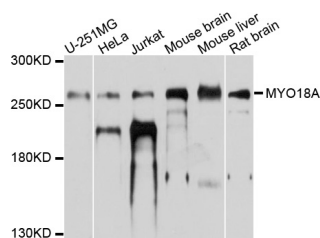
### Description

|                     |  |
|---------------------|--|
| <b>Reactivity</b>   | Human, Mouse, Rat                                    |
| <b>Immunogen</b>    | Recombinant protein of human MYO18A                  |
| <b>Host</b>         | Rabbit   |
| <b>Isotype</b>      | IgG  |
| <b>Purification</b> | Affinity purification                                |
| <b>Conjugation</b>  | Unconjugated   |
| <b>Buffer</b>       | PBS with 0.02% sodium azide and 50% glycerol pH 7.4. |

### Applications Recommended Dilution

**WB** 1:1000-1:2000

### Data



Western blot analysis of extracts of various cell lines with MYO18A Polyclonal Antibody

**Observed Mw:260kDa**

**Calculated**

**Mw:180kDa/196kDa/226kDa/231kDa/233kDa**

### Preparation & Storage

**Storage** Store at -20°C. Avoid freeze / thaw cycles.

### Background

The protein encoded by this gene can bind GOLPH3, linking the Golgi to the cytoskeleton and influencing Golgi membrane trafficking. The encoded protein is also part of a complex that assembles lamellar actomyosin bundles and may be required for cell migration.

### For Research Use Only