

YWHAH Polyclonal Antibody

Catalog No. E-AB-65610

Note: Centrifuge before opening to ensure complete recovery of vial contents.

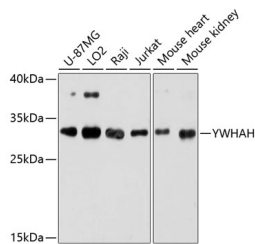
Description

| | |
|---------------------|--|
| Reactivity | Human, Mouse, Rat |
| Immunogen | Recombinant fusion protein of human YWHAH (NP_003396.1). |
| Host | Rabbit |
| Isotype | IgG |
| Purification | Affinity purification |
| Conjugation | Unconjugated |
| Buffer | PBS with 0.02% sodium azide, 50% glycerol, pH7.3. |

Applications Recommended Dilution

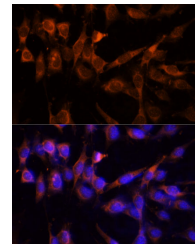
| | |
|-----------|--------------|
| WB | 1:500-1:2000 |
| IF | 1:50-1:100 |

Data

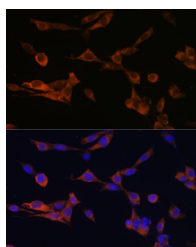


Western blot analysis of extracts of various cell lines using YWHAH Polyclonal Antibody at dilution of 1:3000.

Observed Mw:28kDa
Calculated Mw:28kDa



Immunofluorescence analysis of NIH-3T3 cells using YWHAH Polyclonal Antibody at dilution of 1:100 (40x lens). Blue: DAPI for nuclear staining.



Immunofluorescence analysis of NIH-3T3 cells using YWHAH Polyclonal Antibody at dilution of 1:100 (40x lens). Blue: DAPI for nuclear staining.

Preparation & Storage

For Research Use Only

Storage Store at -20°C. Avoid freeze / thaw cycles.

Background

This gene product belongs to the 14-3-3 family of proteins which mediate signal transduction by binding to phosphoserine-containing proteins. This highly conserved protein family is found in both plants and mammals, and this protein is 99% identical to the mouse, rat and bovine orthologs. This gene contains a 7 bp repeat sequence in its 5' UTR, and changes in the number of this repeat have been associated with early-onset schizophrenia and psychotic bipolar disorder.