

ADCY1 Polyclonal Antibody

Catalog No. E-AB-63973

Note: Centrifuge before opening to ensure complete recovery of vial contents.

Description

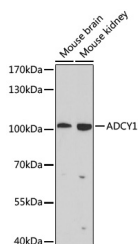
Reactivity	Human, Mouse
Immunogen	Recombinant fusion protein of human ADCY1 (NP_066939.1).
Host	Rabbit
Isotype	IgG
Purification	Affinity purification
Conjugation	Unconjugated
Buffer	PBS with 0.02% sodium azide, 50% glycerol, pH7.3.

Applications

Recommended Dilution

WB 1:200-1:1000

Data



Western blot analysis of extracts of various cell lines using ADCY1 Polyclonal Antibody at dilution of 1:1000.

Observed Mw:123kDa
Calculated Mw:123kDa

Preparation & Storage

Storage Store at -20°C. Avoid freeze / thaw cycles.

Background

This gene encodes a member of the of adenylate cyclase gene family that is primarily expressed in the brain. This protein is regulated by calcium/calmodulin concentration and may be involved in brain development. Alternate splicing results in multiple transcript variants.

For Research Use Only