

PMAIP1 Polyclonal Antibody

Catalog Number:E-AB-63974

Note: Centrifuge before opening to ensure complete recovery of vial contents.

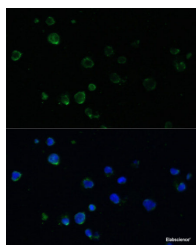
Description

Reactivity	Human,Mouse,Rat
Immunogen	A synthetic peptide of human PMAIP1 (NP_066950.1).
Host	Rabbit
Isotype	IgG
Purification	Affinity purification
Conjugation	Unconjugated
Formulation	PBS with 0.02% sodium azide, 50% glycerol, pH7.3.

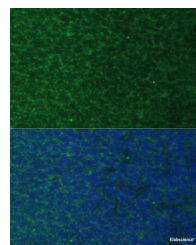
Applications Recommended Dilution

IF	1:50-1:200
-----------	------------

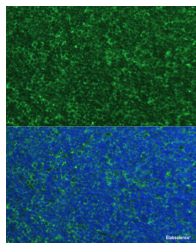
Data



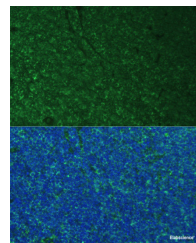
Immunofluorescence analysis of Jurkat cells using PMAIP1 Polyclonal Antibody at dilution of 1:100. Blue: DAPI for nuclear staining.



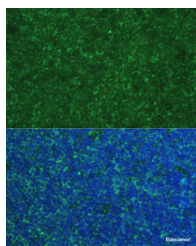
Immunofluorescence analysis of Rat breast cells using PMAIP1 Polyclonal Antibody at dilution of 1:100. Blue: DAPI for nuclear staining.



Immunofluorescence analysis of Mouse breast cells using PMAIP1 Polyclonal Antibody at dilution of 1:100. Blue: DAPI for nuclear staining.



Immunofluorescence analysis of Mouse breast cells using PMAIP1 Polyclonal Antibody at dilution of 1:100. Blue: DAPI for nuclear staining.



Immunofluorescence analysis of Mouse breast cells using PMAIP1 Polyclonal Antibody at dilution of 1:100. Blue: DAPI for nuclear staining.

For Research Use Only

A Reliable Research Partner in Life Science and Medicine

Toll-free: 1-888-852-8623

Web: www.elabscience.com

Tel: 1-832-243-6086

Email: techsupport@elabscience.com

Fax: 1-832-243-6017

PMAIP1 Polyclonal Antibody

Catalog Number:E-AB-63974



Preparation & Storage

Storage Store at -20°C. Avoid freeze / thaw cycles.

Background

PMAIP1 (Phorbol-12-Myristate-13-Acetate-Induced Protein 1) is a Protein Coding gene. Diseases associated with PMAIP1 include Adult T-Cell Leukemia and Mantle Cell Lymphoma. Among its related pathways are Apoptosis Modulation and Signaling and Apoptosis and survival_Regulation of Apoptosis by Mitochondrial Proteins.

For Research Use Only

A Reliable Research Partner in Life Science and Medicine

Toll-free: 1-888-852-8623

Web: www.elabscience.com

Tel: 1-832-243-6086

Email: techsupport@elabscience.com

Fax: 1-832-243-6017