

SUPV3L1 Polyclonal Antibody

Catalog No. E-AB-62230

Note: Centrifuge before opening to ensure complete recovery of vial contents.

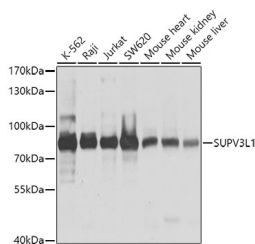
Description

| | |
|---------------------|--|
| Reactivity | Human, Mouse, Rat |
| Immunogen | Recombinant fusion protein of human SUPV3L1 (NP_003162.2). |
| Host | Rabbit |
| Isotype | IgG |
| Purification | Affinity purification |
| Conjugation | Unconjugated |
| Buffer | PBS with 0.02% sodium azide, 50% glycerol, pH7.3. |

Applications Recommended Dilution

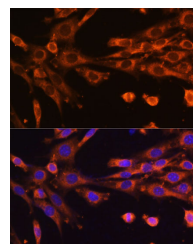
| | |
|-----------|---------------|
| WB | 1:1000-1:4000 |
| IF | 1:50-1:200 |

Data



Western blot analysis of extracts of various cell lines using SUPV3L1 Polyclonal Antibody at dilution of 1:1000.

Observed Mw:88kDa
Calculated Mw:87kDa



Immunofluorescence analysis of NIH-3T3 cells using SUPV3L1 Polyclonal Antibody at dilution of 1:100 (40x lens). Blue: DAPI for nuclear staining.

Preparation & Storage

Storage Store at -20°C. Avoid freeze / thaw cycles.

Background

SUPV3L1 (Suv3 Like RNA Helicase) is a Protein Coding gene. Diseases associated with SUPV3L1 include Uveoparotid Fever and Neuropathy, Hereditary Motor And Sensory, Russe Type. Gene Ontology (GO) annotations related to this gene include RNA binding.

For Research Use Only