

## CEP164 Polyclonal Antibody

**Catalog No.** E-AB-63983

*Note:* Centrifuge before opening to ensure complete recovery of vial contents.

### Description

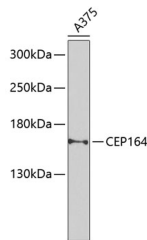
<b>Reactivity</b>	Human,Mouse,Rat
<b>Immunogen</b>	Recombinant fusion protein of human CEP164 (NP_055771.4).
<b>Host</b>	Rabbit
<b>Isotype</b>	IgG
<b>Purification</b>	Affinity purification
<b>Conjugation</b>	Unconjugated
<b>Buffer</b>	PBS with 0.02% sodium azide, 50% glycerol, pH7.3.

### Applications

### Recommended Dilution

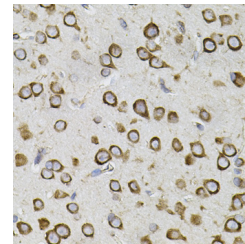
<b>WB</b>	1:500-1:2000
<b>IHC</b>	1:50-1:200

### Data

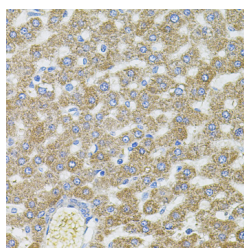


Western blot analysis of extracts of A-375 cells using CEP164 Polyclonal Antibody at dilution of 1:1000.

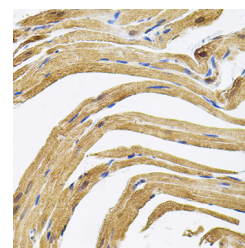
**Observed Mw:164kDa**  
**Calculated Mw:163kDa/164kDa**



Immunohistochemistry of paraffin-embedded Mouse brain using CEP164 Polyclonal Antibody

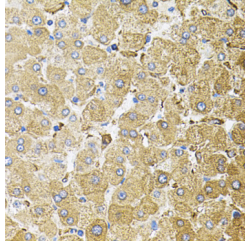


Immunohistochemistry of paraffin-embedded Rat liver using CEP164 Polyclonal Antibody



Immunohistochemistry of paraffin-embedded Rat heart using CEP164 Polyclonal Antibody

### For Research Use Only



Immunohistochemistry of paraffin-embedded  
Human liver damage using CEP164 Polyclonal  
Antibody

## Preparation & Storage

**Storage** Store at -20°C. Avoid freeze / thaw cycles.

## Background

This gene encodes a centrosomal protein involved in microtubule organization, DNA damage response, and chromosome segregation. The encoded protein is required for assembly of primary cilia and localizes to mature centrioles. Defects in this gene are a cause of nephronophthisis-related ciliopathies. Two transcript variants encoding different isoforms have been found for this gene.