

## TUFM Polyclonal Antibody

Catalog No. E-AB-40180

**Note:** Centrifuge before opening to ensure complete recovery of vial contents.

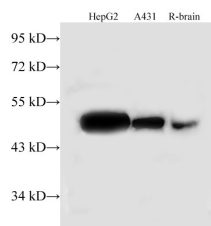
### Description

<b>Reactivity</b>	Human,Rat
<b>Immunogen</b>	Recombinant Human Elongation factor Tu, mitochondrial protein
<b>Host</b>	Rabbit
<b>Isotype</b>	IgG
<b>Purification</b>	Affinity purification
<b>Conjugation</b>	Unconjugated
<b>Buffer</b>	PBS with 0.02% sodium azide,1% protective protein and 50% glycerol,pH7.4

### Applications Recommended Dilution

**WB** 1:500-1:2000

### Data



Western Blot analysis of HepG2, A431 cells and Rat brain using TUFM Polyclonal Antibody at dilution of 1:500

**Observed Mw:50kDa**  
**Calculated Mw:50kDa**

### Preparation & Storage

**Storage** Store at -20°C. Avoid freeze / thaw cycles.

### Background

TUFM, also named as Elongation factor Tu, mitochondrial, is a 452 amino acid protein, which contains 1 tr-type G (guanine nucleotide-binding) domain and belongs to the TRAFAC class translation factor GTPase superfamily. TUFM localizes in the Mitochondrion and promotes the GTP-dependent binding of aminoacyl-tRNA to the A-site of ribosomes during protein biosynthesis.

### For Research Use Only