

MAPK13 Polyclonal Antibody

Catalog No. E-AB-40183

Note: Centrifuge before opening to ensure complete recovery of vial contents.

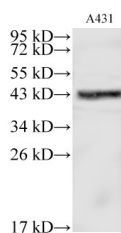
Description

Reactivity	Human
Immunogen	Recombinant Human Mitogen-activated protein kinase 13 protien
Host	Rabbit
Isotype	IgG
Purification	Affinity purification
Conjugation	Unconjugated
Buffer	PBS with 0.02% sodium azide,1% protective protein and 50% glycerol,pH7.4

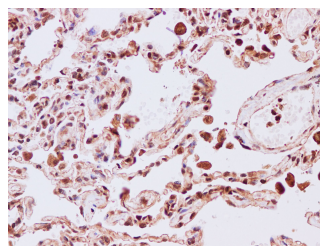
Applications Recommended Dilution

WB	1:500-1:2000
IHC	1:50-1:200

Data



Western Blot analysis of A431 cells using MAPK13 Polyclonal Antibody at dilution of 1:500
Observed Mw:42kDa-43kDa
Calculated Mw:42kDa



Immunohistochemistry of paraffin-embedded Human lung using MAPK13 Polyclonal Antibody at dilution of 1:200

Preparation & Storage

Storage Store at -20°C. Avoid freeze / thaw cycles.

Background

MAPK13(Mitogen-activated protein kinase 13) is also named as PRKM13,SAPK4 and belongs to the protein kinase superfamily. MAPK13 is one of the four p38 MAPKs which play an important role in the cascades of cellular responses evoked by extracellular stimuli such as proinflammatory cytokines or physical stress leading to direct activation of transcription factors such as ELK1 and ATF2.

For Research Use Only