

KRAS Polyclonal Antibody

Catalog No. E-AB-40187

Note: Centrifuge before opening to ensure complete recovery of vial contents.

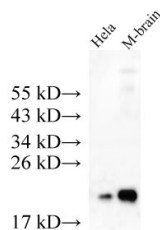
Description

Reactivity	Human,Mouse
Immunogen	Recombinant Human GTPase KRas protein
Host	Rabbit
Isotype	IgG
Purification	Affinity purification
Conjugation	Unconjugated
Buffer	PBS with 0.05% Proclin300 and 50% glycerol, pH7.4.

Applications Recommended Dilution

WB 1:500-1:2000

Data



Western Blot analysis of HeLa cells and Mouse brain tissue using KRAS Polyclonal Antibody at dilution of 1:500

Observed Mw:21kDa
Calculated Mw:21kDa

Preparation & Storage

Storage Store at -20°C. Avoid freeze / thaw cycles.

Background

KRAS, also called p21, is a member of the Ras superfamily of proteins. It is located on human chromosome 12, and contains four coding exons and a 5' non-coding exon (PMID: 12778136). KRAS is a membrane-anchored guanosine triphosphate/guanosine diphosphate (GTP/GDP)-binding protein and is widely expressed in most human cells. Like other members of the Ras family, the KRAS protein is a GTPase, and it is involved in intracellular signal transduction and is mainly responsible for EGFR-signaling activation (PMID: 19117687). KRAS mutations have been found in various malignancies, including lung adenocarcinoma, mucinous adenoma, ductal carcinoma of the pancreas and colorectal carcinoma. KRAS has two isoforms, a and b.

For Research Use Only