

RPS25 Polyclonal Antibody

Catalog No. E-AB-40190

Note: Centrifuge before opening to ensure complete recovery of vial contents.

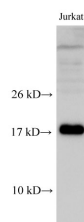
Description

Reactivity	Human
Immunogen	Recombinant Human 40S ribosomal protein S25 protein
Host	Rabbit
Isotype	IgG
Purification	Affinity purification
Conjugation	Unconjugated
Buffer	PBS with 0.02% sodium azide, 1% protective protein and 50% glycerol, pH7.4

Applications Recommended Dilution

WB 1:500-1:2000

Data



Western Blot analysis of Jurkat cell using RPS25 Polyclonal Antibody at dilution of 1:500

Observed Mw:17 kDa
Calculated Mw:14 kDa

Preparation & Storage

Storage Store at -20°C. Avoid freeze / thaw cycles.

Background

ribosomal protein S25 (RPS25) is a novel MDM2 interacting protein. It may be involved in viral replication of Dicrostoviridae and hepatitis C viruses. RPS25 is overexpressed in human leukemia cells exhibiting adriamycin resistance. It may have a role in p53-mediated apoptosis and cell-cycle arrest. The expected MW of RPS25 is about 15-17kDa.

For Research Use Only