

CK-18 Polyclonal Antibody

Catalog No. E-AB-40202

Note: Centrifuge before opening to ensure complete recovery of vial contents.

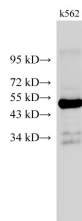
Description

| | |
|---------------------|---|
| Reactivity | Human |
| Immunogen | Recombinant Human Keratin, type I cytoskeletal 18 protein |
| Host | Rabbit |
| Isotype | IgG |
| Purification | Affinity purification |
| Conjugation | Unconjugated |
| Buffer | PBS with 0.05% Proclin300 and 50% glycerol, pH7.4. |

Applications Recommended Dilution

WB 1:500-1:2000

Data



Western Blot analysis of k562 cell using CK-18 Polyclonal Antibody at dilution of 1:500

Observed Mw:48kDa
Calculated Mw:48kDa

Preparation & Storage

Storage Store at -20°C. Avoid freeze / thaw cycles.

Background

Cytokeratin 18 (CK18) has a molecular weight of 45 KDa, which is a low molecular weight type A cytokeratin. It is a marker of simple epithelium, including glandular epithelium. The stratified squamous epithelium is generally negative. CK18 is mainly used in the diagnosis of adenocarcinoma.

For Research Use Only