

CYCS Polyclonal Antibody

Catalog No. E-AB-40209

Note: Centrifuge before opening to ensure complete recovery of vial contents.

Description

Reactivity	Human,Bovine
Immunogen	Recombinant Human Cytochrome c protein
Host	Rabbit
Isotype	IgG
Purification	Affinity purification
Conjugation	Unconjugated
Buffer	PBS with 0.05% Proclin300 and 50% glycerol, pH7.4.

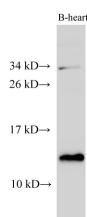
Applications

Recommended Dilution

WB 1:1000-1:2000

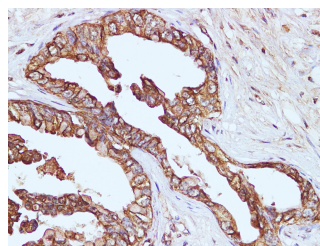
IHC 1:100-1:200

Data



Western Blot analysis of Bovine heart using CYCS Polyclonal Antibody at dilution of 1:1000

Observed Mw:12kDa
Calculated Mw:12kDa



Immunohistochemistry of paraffin-embedded Human pancreatic cancer using CYCS Polyclonal Antibody at dilution of 1:100

Preparation & Storage

Storage Store at -20°C. Avoid freeze / thaw cycles.

Background

Cytochrome c is a 12-15 kDa electron transporting protein located in the inner mitochondrial membrane. Upon apoptotic stimulation, cytochrome c can be released from mitochondria into cytoplasm, resulting in caspase-3 activation and apoptosis. Measurement of cytochrome c release from the mitochondria is useful for detection of the onset of apoptosis in cells. In addition, cytochrome c can also leave cells and be detectable in extra-cellular medium of apoptotic cells and serum of cancer patients. The level of serum cytochrome c may serve as a prognostic marker during cancer therapy.

For Research Use Only