

CK-8 Polyclonal Antibody

Catalog No. E-AB-40213

Note: Centrifuge before opening to ensure complete recovery of vial contents.

Description

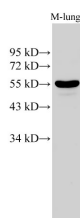
Reactivity	Human,Mouse
Immunogen	Recombinant Human Keratin, type II cytoskeletal 8 protien
Host	Rabbit
Isotype	IgG
Purification	Affinity Purification
Conjugation	Unconjugated
Buffer	PBS with 0.05% Proclin300 and 50% glycerol, pH7.4.

Applications

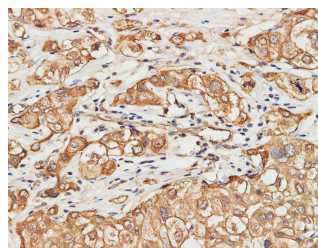
Recommended Dilution

WB 1:500-1:1000 IHC
1:100-1:400

Data



Western Blot analysis of Mouse lung using CK-8 Polyclonal Antibody at dilution of 1:500
Observed Mw:57 kDa
Calculated Mw:54,57 kDa



Immunohistochemistry of paraffin-embedded Human liver cancer using CK-8 Polyclonal Antibody at dilution of 1:200

Preparation & Storage

Storage Store at -20°C. Avoid freeze / thaw cycles.

Background

Cytokeratin 8 (CK8) has a molecular weight of 52.5 KDa, which belongs to the HMW (high molecular weight) B-type Cytokeratin. CK8 is mainly marked on non-squamous epithelium, thus can be used for the diagnosis of adenocarcinoma and ductal carcinoma. Generally, CK8 is not expressed in squamous cell carcinoma. It is reported that hepatocellular carcinoma mainly express CK8 and CK18.

For Research Use Only