

## IL27 Polyclonal Antibody

**Catalog No.** E-AB-40216

*Note:* Centrifuge before opening to ensure complete recovery of vial contents.

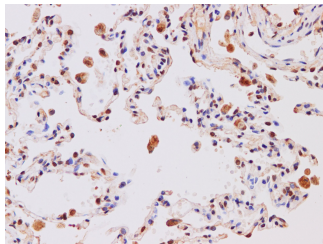
### Description

<b>Reactivity</b>	Human
<b>Immunogen</b>	Recombinant Human Interleukin-27 subunit alpha protien
<b>Host</b>	Rabbit
<b>Isotype</b>	IgG
<b>Purification</b>	Affinity purification
<b>Conjugation</b>	Unconjugated
<b>Buffer</b>	PBS with 0.05% Proclin300 and 50% glycerol, pH7.4.

### Applications Recommended Dilution

**IHC 1:100-1:400**

### Data



Immunohistochemistry of paraffin-embedded Human lung using IL27 Polyclonal Antibody at dilution of 1:200

### Preparation & Storage

**Storage** Store at -20°C. Avoid freeze / thaw cycles.

### Background

IL-27, a member of IL-12/IL-23 heterodimeric family of cytokines, has pleiotropic properties that can enhance or limit immune responses. IL-27 is a heterodimeric cytokine composed of two subunits: IL-27a and IL-27b. IL-27 acts on various cell types, including T cells, B cells, macrophages, dendritic cells, natural killer (NK) cells and non-hematopoietic cells. IL-27 plays a critical role in the early regulation of T helper type 1 initiation, and enhances proliferation of naive CD4+T cells and naive B cells. It, however, also exerts anti-inflammatory functions by inhibiting the development of Th17 cells and inducing IL-10 producing type 1 regulatory T cells. IL-27 is a potentially promising cytokine for therapeutic approaches on various human diseases.

### For Research Use Only