

## MCM3 Polyclonal Antibody

**Catalog No.** E-AB-40230

*Note:* Centrifuge before opening to ensure complete recovery of vial contents.

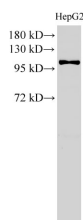
### Description

|                     |  |
|---------------------|--|
| <b>Reactivity</b>   | Human, Mouse, Rat  |
| <b>Immunogen</b>    | Recombinant Human DNA replication licensing factor MCM3 protein            |
| <b>Host</b>         | Rabbit   |
| <b>Isotype</b>      | IgG  |
| <b>Purification</b> | Antigen Affinity Purification  |
| <b>Conjugation</b>  | Unconjugated   |
| <b>Buffer</b>       | PBS with 0.02% sodium azide, 1% protective protein and 50% glycerol, pH7.4 |

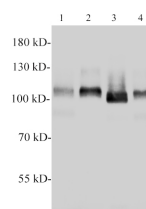
### Applications Recommended Dilution

|            |              |
|------------|--------------|
| <b>WB</b>  | 1:500-1:1000 |
| <b>IHC</b> | 1:50-1:200   |

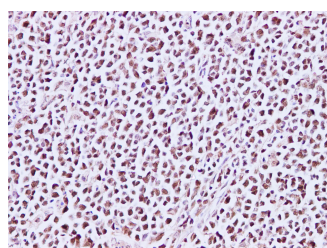
### Data



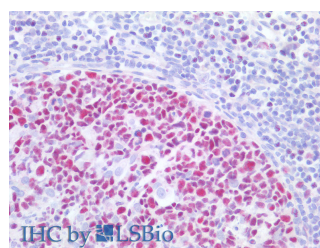
Western Blot analysis of HepG2 cell using MCM3 Polyclonal Antibody at dilution of 1:500  
**Observed Mw:100 kDa**  
**Calculated Mw:91,96 kDa**



Western blotting with anti-MCM3 polyclonal antibody at dilution of 1:1000. Lane 1:PC-12 cell lysate, Lane 2:C6 cell lysate, lane 3:Raw264.7 cell lysate, lane 4:NIH/3T3 cell lysate.



Immunohistochemistry of paraffin-embedded Human lymph node using MCM3 Polyclonal Antibody at dilution of 1:200



Immunohistochemistry of paraffin-embedded Human tonsil using MCM3 Polyclonal Antibody at dilution of 1:200 (Elabscience® Product Detected by Lifespan).

### Preparation & Storage

#### For Research Use Only

**Storage** Store at -20°C. Avoid freeze / thaw cycles.

## Background

The protein encoded by this gene is one of the highly conserved mini-chromosome maintenance proteins (MCM) that are involved in the initiation of eukaryotic genome replication. The hexameric protein complex formed by MCM proteins is a key component of the pre-replication complex (pre\_RC) and may be involved in the formation of replication forks and in the recruitment of other DNA replication related proteins. This protein is a subunit of the protein complex that consists of MCM2-7. It has been shown to interact directly with mCM5/CDC46. This protein also interacts with and is acetylated by MCM3AP, a chromatin-associated acetyltransferase. The acetylation of this protein inhibits the initiation of DNA replication and cell cycle progression. Two transcript variants encoding different isoforms have been found for this gene.

---

## For Research Use Only