

## ERK 8 Polyclonal Antibody

Catalog No. E-AB-40233

**Note:** Centrifuge before opening to ensure complete recovery of vial contents.

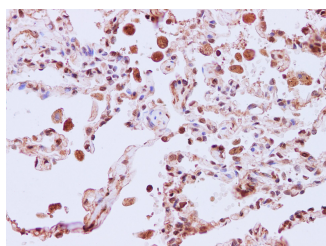
### Description

<b>Reactivity</b>	Human
<b>Immunogen</b>	Recombinant Human Mitogen-activated protein kinase 15 protien
<b>Host</b>	Rabbit
<b>Isotype</b>	IgG
<b>Purification</b>	Affinity purification
<b>Conjugation</b>	Unconjugated
<b>Buffer</b>	PBS with 0.05% Proclin300 and 50% glycerol, pH7.4.

### Applications Recommended Dilution

**IHC 1:50-1:200**

### Data



Immunohistochemistry of paraffin-embedded Human lung using ERK8 Polyclonal Antibody at dilution of 1:200

### Preparation & Storage

**Storage** Store at -20°C. Avoid freeze / thaw cycles.

### Background

MAPK15 (mitogen-activated protein kinase 15, ERK8) is a 544 amino acid protein that belongs to the CMGC Ser/Thr protein kinase family (MAP kinase subfamily). MAP kinases play a significant role in many biological processes, including cell adhesion and spreading, cell differentiation and apoptosis. MAPK15 functions as a catalytic kinase using ATP to produce ADP and a phosphoprotein. A TXY motif, containing one threonine and one tyrosine residue, activates the MAP kinases upon phosphorylation. MAPK15 is a ubiquitously expressed protein with highest expression found in lung and kidney.

### For Research Use Only