

gamma Tubulin Polyclonal Antibody

Catalog No. E-AB-40239

Note: Centrifuge before opening to ensure complete recovery of vial contents.

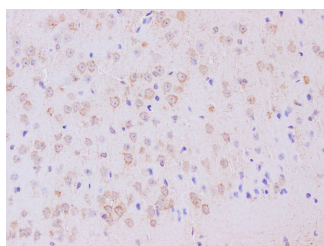
Description

Reactivity	Mouse
Immunogen	Recombinant Mouse Tubulin gamma-2 chain protien
Host	Rabbit
Isotype	IgG
Purification	Affinity purification
Conjugation	Unconjugated
Buffer	PBS with 0.05% Proclin300 and 50% glycerol, pH7.4.

Applications Recommended Dilution

IHC 1:50-1:200

Data



Immunohistochemistry of paraffin-embedded Mouse brain using gamma Tubulin Polyclonal Antibody at dilution of 1:200

Preparation & Storage

Storage Store at -20°C. Avoid freeze / thaw cycles.

Background

TUBG2 (Tubulin Gamma 2) is a Protein Coding gene. Among its related pathways are PAK Pathway and PI3K-Akt signaling pathway. Gene Ontology (GO) annotations related to this gene include GTP binding and structural molecule activity. An important paralog of this gene is TUBG1.

For Research Use Only