

BAX Polyclonal Antibody

Catalog No. E-AB-70003

Note: Centrifuge before opening to ensure complete recovery of vial contents.

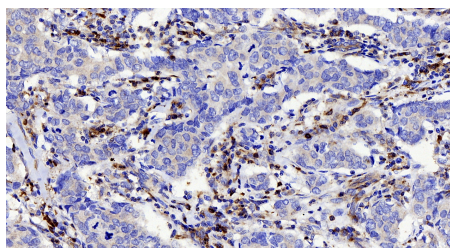
Description

Reactivity	Human,Mouse,Rat
Immunogen	KLH conjugated Synthetic peptide corresponding to Mouse Bax
Host	Rabbit
Isotype	IgG
Purification	Affinity purification
Conjugation	Unconjugated
Buffer	PBS with 0.02% sodium azide, 1% BSA and 50% glycerol, pH7.4

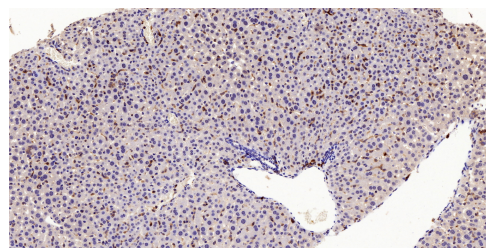
Applications Recommended Dilution

IHC 1:500-1:1500, IF
1:500-1:1500

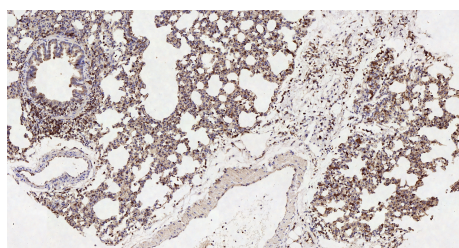
Data



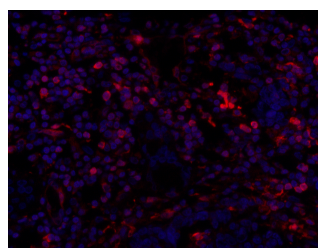
Immunohistochemistry analysis of paraffin-embedded Human breast using BAX Polyclonal Antibody at dilution of 1:300.



Immunohistochemistry analysis of paraffin-embedded Mouse liver using BAX Polyclonal Antibody at dilution of 1:500.



Immunohistochemistry analysis of paraffin-embedded Rat lung using BAX Polyclonal Antibody at dilution of 1:500.



Immunofluorescence analysis of Human lung tissue using BAX Polyclonal Antibody at dilution of 1:50.

Preparation & Storage

Storage Store at -20°C. Avoid freeze / thaw cycles.

Background

For Research Use Only

BAX, also named as BCL2L4, is a pro-apoptotic member of the Bcl-2 protein family, which plays a pivotal role in controlling cell life and death. Bax largely localizes to the cytoplasm of healthy cells, but accumulates on the outer mitochondrial membrane upon apoptosis induction. BAX can commit a cell to apoptosis by translocation from the cytosol to the mitochondria and permeabilization of the outer mitochondrial membrane, which leads to the release of cytochrome c from mitochondria. The expression of BAX is upregulated by the tumor suppressor protein p53, and BAX has been shown to be involved in p53-mediated apoptosis.

For Research Use Only