

## VWF Polyclonal Antibody

**Catalog No.** E-AB-70006

*Note:* Centrifuge before opening to ensure complete recovery of vial contents.

### Description

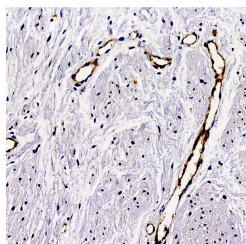
<b>Reactivity</b>	Human,Rat
<b>Immunogen</b>	KLH conjugated Synthetic peptide corresponding to Mouse VWF
<b>Host</b>	Rabbit
<b>Isotype</b>	IgG
<b>Purification</b>	Affinity purification
<b>Conjugation</b>	Unconjugated
<b>Buffer</b>	PBS with 0.02% sodium azide, 1% protective protein and 50% glycerol, pH7.4

### Applications

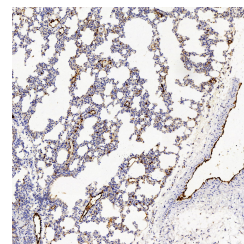
### Recommended Dilution

**IHC** 1:200-1:800

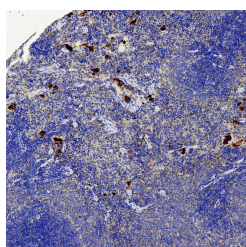
### Data



Immunohistochemistry analysis of paraffin-embedded Human hysteromyoma using VWF Polyclonal Antibody at dilution of 1:300.



Immunohistochemistry analysis of paraffin-embedded Rat lung using VWF Polyclonal Antibody at dilution of 1:500.



Immunohistochemistry analysis of paraffin-embedded Rat spleen using VWF Polyclonal Antibody at dilution of 1:500.

### Preparation & Storage

**Storage** Store at -20°C. Avoid freeze / thaw cycles.

### Background

The glycoprotein encoded by this gene functions as both an antihemophilic factor carrier and a platelet-vessel wall

### For Research Use Only

mediator in the blood coagulation system. It is crucial to the hemostasis process. Mutations in this gene or deficiencies in this protein result in von Willebrand's disease. An unprocessed pseudogene has been found on chromosome 22.