

## CD19 Polyclonal Antibody

**Catalog No.** E-AB-70018

*Note:* Centrifuge before opening to ensure complete recovery of vial contents.

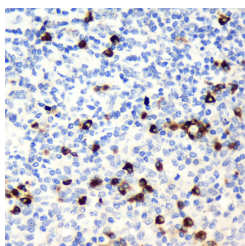
### Description

<b>Reactivity</b>	Human
<b>Immunogen</b>	KLH conjugated Synthetic peptide corresponding to Mouse CD19
<b>Host</b>	Rabbit
<b>Isotype</b>	IgG
<b>Purification</b>	Affinity purification
<b>Conjugation</b>	Unconjugated
<b>Buffer</b>	PBS with 0.02% sodium azide, 1% protective protein and 50% glycerol, pH7.4

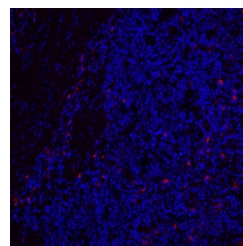
### Applications Recommended Dilution

<b>IHC</b>	1:100-1:500
<b>IF</b>	1:100-1:500

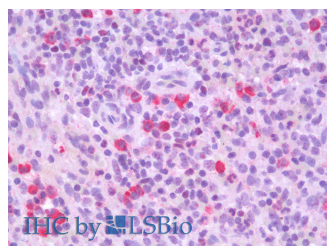
### Data



Immunohistochemistry analysis of paraffin-embedded Human tonsil using CD19 Polyclonal Antibody at dilution of 1:300.



Immunofluorescence analysis of paraffin-embedded Human tonsil using CD19 Polyclonal Antibody at dilution of 1:200.



Immunohistochemistry analysis of paraffin-embedded Human Spleen using CD19 Polyclonal Antibody(Elabscience® Product Detected by Lifespan).

### Preparation & Storage

**Storage** Store at -20°C. Avoid freeze / thaw cycles.

### For Research Use Only

## Background

CD19 is a B cell-specific molecule that controls B cell activation by complexing with the BCR. CD19 is a member of the Ig superfamily and is the dominant component for the signaling complex on B cells that includes CD21, CD81, and CD22. Humans with CD19 deficiency have reduced proliferative responses to BCR stimulation in vitro and mount impaired Ab responses to vaccination.