

CD19 Polyclonal Antibody

Catalog Number:E-AB-70018



Note: Centrifuge before opening to ensure complete recovery of vial contents.

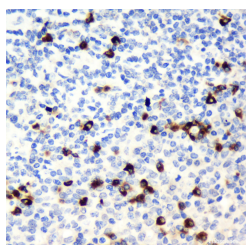
Description

Reactivity	Human
Immunogen	KLH conjugated Synthetic peptide corresponding to Mouse CD19
Host	Rabbit
Isotype	IgG
Purification	Affinity purification
Conjugation	Unconjugated
Formulation	PBS with 0.02% sodium azide, 1% protective protein and 50% glycerol, pH7.4

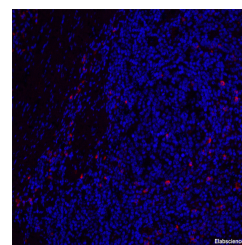
Applications Recommended Dilution

IHC	1:100-1:500
IF	1:100-1:500

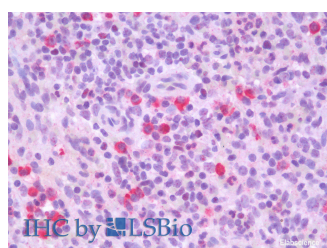
Data



Immunohistochemistry analysis of paraffin-embedded Human tonsil using CD19 Polyclonal Antibody at dilution of 1:300.



Immunofluorescence analysis of paraffin-embedded Human tonsil using CD19 Polyclonal Antibody at dilution of 1:200.



Immunohistochemistry analysis of paraffin-embedded Human Spleen using CD19 Polyclonal Antibody(Elabscience® Product Detected by Lifespan).

Preparation & Storage

Storage Store at -20°C. Avoid freeze / thaw cycles.

Background

CD19 is a B cell-specific molecule that controls B cell activation by complexing with the BCR. CD19 is a member of the Ig superfamily and is the dominant component for the signaling complex on B cells that includes CD21,CD81,and CD22. Humans with CD19 deficiency have reduced proliferative responses to BCR stimulation in vitro and mount

For Research Use Only

A Reliable Research Partner in Life Science and Medicine

Toll-free: 1-888-852-8623

Web: www.elabscience.com

Tel: 1-832-243-6086

Email: techsupport@elabscience.com

Fax: 1-832-243-6017

CD19 Polyclonal Antibody

Catalog Number:E-AB-70018



impaired Ab responses to vaccination.

For Research Use Only

A Reliable Research Partner in Life Science and Medicine

Toll-free: 1-888-852-8623

Tel: 1-832-243-6086

Fax: 1-832-243-6017

Web: www.elabscience.com

Email: techsupport@elabscience.com