

CD31 Polyclonal Antibody

Catalog Number:E-AB-70020

Note: Centrifuge before opening to ensure complete recovery of vial contents.

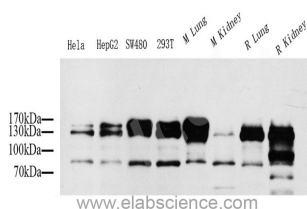
Description

Reactivity	Human,Mouse,Rat
Immunogen	KLH conjugated Synthetic peptide corresponding to Mouse CD31
Host	Rabbit
Isotype	IgG
Purification	Affinity purification
Conjugation	Unconjugated
Formulation	PBS with 0.02% sodium azide, 1% protective protein and 50% glycerol, pH7.4

Applications Recommended Dilution

WB	1:500-1:2000
-----------	--------------

Data



Western Blot analysis of various samples using CD31 Polyclonal Antibody at dilution of 1:1000.

Observed Mw:90/130kDa

Calculated Mw:130kDa

Preparation & Storage

Storage Store at -20°C. Avoid freeze / thaw cycles.

Background

Platelet endothelial cell adhesion molecule-1 (PECAM-1,CD31) is a member of the immunoglobulin gene superfamily of cell adhesion molecules. It is highly expressed on the surface of the endothelium,making up a large portion of its intracellular junctions. PECAM-1 is also present on the surface of hematopoietic cells and immune cells including platelets,monocytes,neutrophils,natural killer cells,megakaryocytes and some types of T-cell . As well as its role in cell-cell adhesion,PECAM-1 functions as a signaling receptor,and is involved in important physiological events such as nitric oxide production,regulation of T-cell immunity and tolerance,leukocyte transendothelial migration and inflammation and angiogenesis .

For Research Use Only

A Reliable Research Partner in Life Science and Medicine

Toll-free: 1-888-852-8623

Web: www.elabscience.com

Tel: 1-832-243-6086

Email: techsupport@elabscience.com

Fax: 1-832-243-6017