

# CD31 Polyclonal Antibody

Catalog Number:E-AB-70021

1 Publications



**Note:** Centrifuge before opening to ensure complete recovery of vial contents.

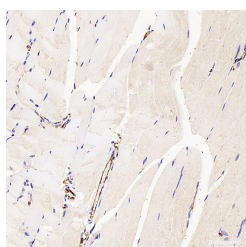
## Description

<b>Reactivity</b>	Mouse
<b>Immunogen</b>	KLH conjugated Synthetic peptide corresponding to Mouse CD31
<b>Host</b>	Rabbit
<b>Isotype</b>	IgG
<b>Purification</b>	Affinity purification
<b>Conjugation</b>	Unconjugated
<b>Formulation</b>	PBS with 0.02% sodium azide, 1% protective protein and 50% glycerol, pH7.4

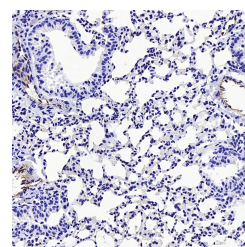
## Applications Recommended Dilution

<b>IHC</b>	1:200-1:500
------------	-------------

## Data



Immunohistochemistry analysis of paraffin-embedded mouse skeletal muscle using CD31 Polyclonal Antibody at dilution of 1:300.



Immunohistochemistry analysis of paraffin-embedded mouse lung cancer using CD31 Polyclonal Antibody at dilution of 1:300.

## Preparation & Storage

**Storage** Store at -20°C. Avoid freeze / thaw cycles.

## Background

Platelet endothelial cell adhesion molecule-1 (PECAM-1,CD31) is a member of the immunoglobulin gene superfamily of cell adhesion molecules. It is highly expressed on the surface of the endothelium,making up a large portion of its intracellular junctions. PECAM-1 is also present on the surface of hematopoietic cells and immune cells including platelets,monocytes,neutrophils,natural killer cells,megakaryocytes and some types of T-cell . As well as its role in cell-cell adhesion,PECAM-1 functions as a signaling receptor,and is involved in important physiological events such as nitric oxide production,regulation of T-cell immunity and tolerance,leukocyte transendothelial migration and inflammation and angiogenesis .

## For Research Use Only

A Reliable Research Partner in Life Science and Medicine

Toll-free: 1-888-852-8623

Web: [www.elabscience.com](http://www.elabscience.com)

Tel: 1-832-243-6086

Email: [techsupport@elabscience.com](mailto:techsupport@elabscience.com)

Fax: 1-832-243-6017