

CD45 Polyclonal Antibody

Catalog No. E-AB-70024

Note: Centrifuge before opening to ensure complete recovery of vial contents.

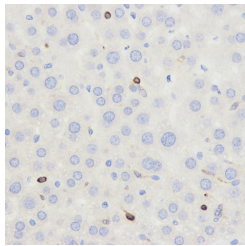
Description

Reactivity	Mouse
Immunogen	KLH conjugated Synthetic peptide corresponding to Mouse CD45
Host	Rabbit
Isotype	IgG
Purification	Affinity purification
Conjugation	Unconjugated
Buffer	PBS with 0.02% sodium azide, 1% protective protein and 50% glycerol, pH7.4

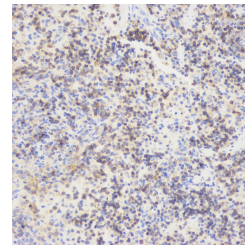
Applications Recommended Dilution

IHC 1:500-1:1500

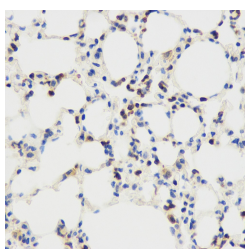
Data



Immunohistochemistry analysis of paraffin-embedded mouse liver using CD45 Polyclonal Antibody at dilution of 1:500.



Immunohistochemistry analysis of paraffin-embedded mouse inflammatory spleen using CD45 Polyclonal Antibody at dilution of 1:1000.



Immunohistochemistry analysis of paraffin-embedded mouse lungs using CD45 Polyclonal Antibody at dilution of 1:1000.

Preparation & Storage

Storage Store at -20°C. Avoid freeze / thaw cycles.

Background

CD45, also known as leukocyte common antigen (LCA), B220, and T200, is a 180-240 kD single chain type I membrane

For Research Use Only

glycoprotein. It is a tyrosine phosphatase expressed on the plasma membrane of all hematopoietic cells, except erythrocytes and platelets. CD45 is a signaling molecule that regulates a variety of cellular processes including cell growth, differentiation, cell cycle, and oncogenic transformation. CD45 is one of the best negative selection markers for characterizing and/or isolating human mesenchymal stem cells from bone marrow and other sources. Along with the positive selection markers (such as CD29, CD44, CD90, CD105 and CD166), negative selection markers (such as CD34 and CD45) are used for MSC identification.

For Research Use Only