

CTGF Polyclonal Antibody

Catalog Number:E-AB-70032

Note: Centrifuge before opening to ensure complete recovery of vial contents.

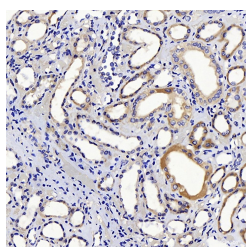
Description

Reactivity	Human,Mouse,Rat
Immunogen	KLH conjugated Synthetic peptide corresponding to Mouse CTGF
Host	Rabbit
Isotype	IgG
Purification	Affinity purification
Conjugation	Unconjugated
Formulation	PBS with 0.02% sodium azide, 1% protective protein and 50% glycerol, pH7.4

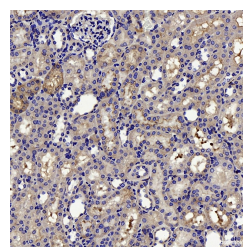
Applications Recommended Dilution

IHC	1:100-1:300
------------	-------------

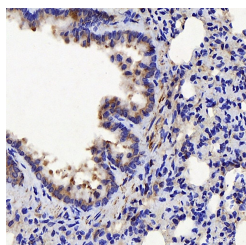
Data



Immunohistochemistry analysis of paraffin-embedded human kidney using CTGF Polyclonal Antibody at dilution of 1:100.



Immunohistochemistry analysis of paraffin-embedded mouse kidney using CTGF Polyclonal Antibody at dilution of 1:100.



Immunohistochemistry analysis of paraffin-embedded rat lung using CTGF Polyclonal Antibody at dilution of 1:100.

Preparation & Storage

Storage Store at -20°C. Avoid freeze / thaw cycles.

Background

The protein encoded by this gene is a mitogen that is secreted by vascular endothelial cells. The encoded protein plays a role in chondrocyte proliferation and differentiation, cell adhesion in many cell types, and is related to platelet-derived growth factor. Certain polymorphisms in this gene have been linked with a higher incidence of systemic sclerosis.

For Research Use Only

A Reliable Research Partner in Life Science and Medicine

Toll-free: 1-888-852-8623

Web: www.elabscience.com

Tel: 1-832-243-6086

Email: techsupport@elabscience.com

Fax: 1-832-243-6017