

## GFAP Polyclonal Antibody

**Catalog No.** E-AB-70040

**Note:** Centrifuge before opening to ensure complete recovery of vial contents.

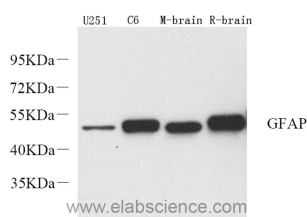
### Description

<b>Reactivity</b>	Human, Mouse, Rat
<b>Immunogen</b>	KLH conjugated Synthetic peptide corresponding to Mouse GFAP
<b>Host</b>	Rabbit
<b>Isotype</b>	IgG
<b>Purification</b>	Affinity purification
<b>Conjugation</b>	Unconjugated
<b>Buffer</b>	PBS with 0.02% sodium azide, 1% protective protein and 50% glycerol, pH7.4

### Applications Recommended Dilution

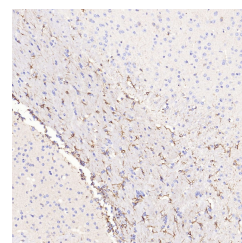
<b>WB</b>	1:1000-1:3000
<b>IHC</b>	1:300-1:800
<b>IF</b>	1:200-1:500

### Data

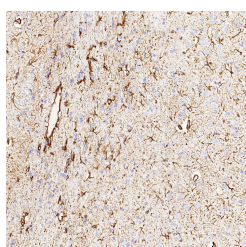


Western Blot analysis of various samples using GFAP Polyclonal Antibody at dilution of 1:2000.

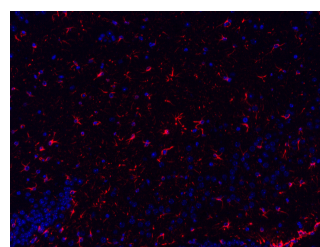
**Observed Mw:49kDa**  
**Calculated Mw:49kDa**



Immunohistochemistry analysis of paraffin-embedded mouse brain using GFAP Polyclonal Antibody at dilution of 1:500.

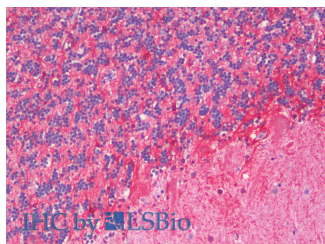


Immunohistochemistry analysis of paraffin-embedded rat brain using GFAP Polyclonal Antibody at dilution of 1:500.



Immunofluorescence analysis of paraffin-embedded mouse brain using GFAP Polyclonal Antibody at dilution of 1:300.

### For Research Use Only



Immunohistochemistry analysis of paraffin-embedded Human Cerebellum using GFAP Polyclonal Antibody(Elabscience® Product Detected by Lifespan).

## Preparation & Storage

**Storage** Store at -20°C. Avoid freeze / thaw cycles.

## Background

GFAP (Glial fibrillary acidic protein ),an intermediate-filament (IF) protein ,is specifically expressed in cells of astroglial lineage and is widely used to mark the astroglia in the brain. It is also used as a marker for intracranial and intraspinal tumors arising from astrocytes.

## For Research Use Only