

**Note:** Centrifuge before opening to ensure complete recovery of vial contents.

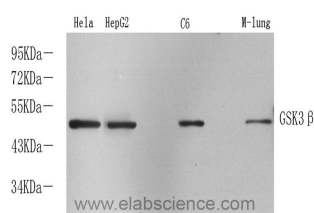
## Description

|                     |  |
|---------------------|--|
| <b>Reactivity</b>   | Human, Mouse, Rat  |
| <b>Immunogen</b>    | KLH conjugated Synthetic peptide corresponding to Mouse GSK3 $\beta$       |
| <b>Host</b>         | Rabbit   |
| <b>Isotype</b>      | IgG  |
| <b>Purification</b> | Affinity purification  |
| <b>Conjugation</b>  | Unconjugated   |
| <b>Formulation</b>  | PBS with 0.02% sodium azide, 1% protective protein and 50% glycerol, pH7.4 |

## Applications Recommended Dilution

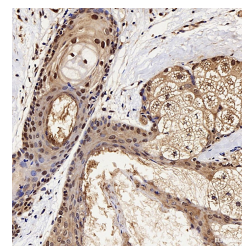
|            |              |
|------------|--------------|
| <b>WB</b>  | 1:500-1:2000 |
| <b>IHC</b> | 1:300-1:800  |
| <b>IF</b>  | 1:200-1:500  |

## Data

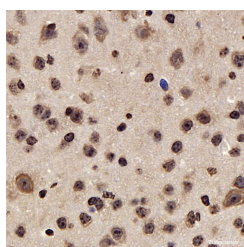


Western Blot analysis of various samples using GSK3 beta Polyclonal Antibody at dilution of 1:1000.

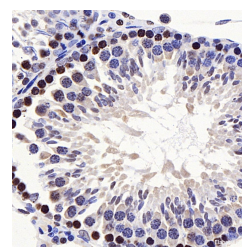
**Observed Mw: 47kDa**  
**Calculated Mw: 47kDa**



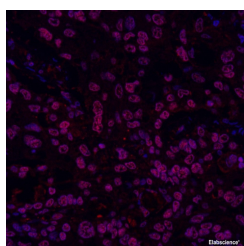
Immunohistochemistry analysis of paraffin-embedded human ovary cancer using GSK3 beta Polyclonal Antibody at dilution of 1:300.



Immunohistochemistry analysis of paraffin-embedded mouse brain using GSK3 beta Polyclonal Antibody at dilution of 1:300.



Immunohistochemistry analysis of paraffin-embedded rat testis using GSK3 beta Polyclonal Antibody at dilution of 1:300.



## For Research Use Only

A Reliable Research Partner in Life Science and Medicine

Toll-free: 1-888-852-8623

Web: [www.elabscience.com](http://www.elabscience.com)

Tel: 1-832-243-6086

Email: [techsupport@elabscience.com](mailto:techsupport@elabscience.com)

Fax: 1-832-243-6017

# GSK3 beta Polyclonal Antibody

Catalog Number: E-AB-70043

1 Publications



Immunofluorescence analysis of paraffin-embedded human liver cancer using GSK3 beta Polyclonal Antibody at dilution of 1:300.

## Preparation & Storage

**Storage** Store at -20°C. Avoid freeze / thaw cycles.

## Background

The protein encoded by this gene is a serine-threonine kinase belonging to the glycogen synthase kinase subfamily. It is a negative regulator of glucose homeostasis and is involved in energy metabolism, inflammation, ER-stress, mitochondrial dysfunction, and apoptotic pathways. Defects in this gene have been associated with Parkinson disease and Alzheimer disease.

## For Research Use Only

A Reliable Research Partner in Life Science and Medicine

Toll-free: 1-888-852-8623

Web: [www.elabscience.com](http://www.elabscience.com)

Tel: 1-832-243-6086

Email: [techsupport@elabscience.com](mailto:techsupport@elabscience.com)

Fax: 1-832-243-6017