

N-cadherin Polyclonal Antibody

Catalog Number: E-AB-70061

9 Publications



Note: Centrifuge before opening to ensure complete recovery of vial contents.

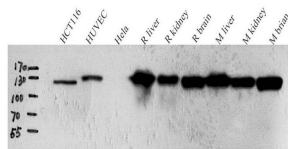
Description

Reactivity	Human, Mouse, Rat
Immunogen	KLH conjugated Synthetic peptide corresponding to Mouse N-cadherin
Host	Rabbit
Isotype	IgG
Purification	Affinity purification
Conjugation	Unconjugated
Formulation	PBS with 0.02% sodium azide, 1% protective protein and 50% glycerol, pH7.4

Applications Recommended Dilution

WB	1:500-1:2000
IHC	1:300-1:800

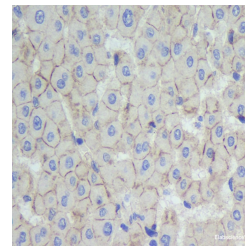
Data



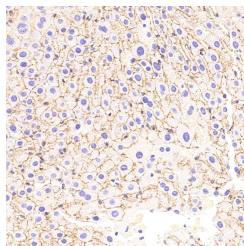
www.elabscience.com

Western Blot analysis of various samples using N-cadherin Polyclonal Antibody at dilution of 1:1000.

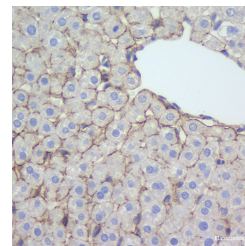
Observed Mw: 120kDa
Calculated Mw: 100/120/140kDa



Immunohistochemistry analysis of paraffin-embedded human liver using N-cadherin Polyclonal Antibody at dilution of 1:500.



Immunohistochemistry analysis of paraffin-embedded mouse liver using N-cadherin Polyclonal Antibody at dilution of 1:500.



Immunohistochemistry analysis of paraffin-embedded rat liver using N-cadherin Polyclonal Antibody at dilution of 1:500.

Preparation & Storage

Storage Store at -20°C. Avoid freeze / thaw cycles.

Background

Cadherins are a family of transmembrane glycoproteins that mediate calcium-dependent cell-cell adhesion and play an important role in the maintenance of normal tissue architecture. N-cadherin (neural cadherin), also known as CDH2 (cadherin 2), is a classical member of the cadherin superfamily which also includes E-, P-, R-, and B-cadherins. Expression

For Research Use Only

A Reliable Research Partner in Life Science and Medicine

Toll-free: 1-888-852-8623

Web: www.elabscience.com

Tel: 1-832-243-6086

Email: techsupport@elabscience.com

Fax: 1-832-243-6017

N-cadherin Polyclonal Antibody

Catalog Number: E-AB-70061

9 Publications



of N-cadherin has been reported on various cell types including neurons, endothelial cells and cardiac myocytes . N-cadherin has functions in early brain morphogenesis, synaptogenesis and synaptic plasticity .

For Research Use Only

A Reliable Research Partner in Life Science and Medicine

Toll-free: 1-888-852-8623

Tel: 1-832-243-6086

Fax: 1-832-243-6017

Web: www.elabscience.com

Email: techsupport@elabscience.com