

NEFH Polyclonal Antibody

Catalog No. E-AB-70063

Note: Centrifuge before opening to ensure complete recovery of vial contents.

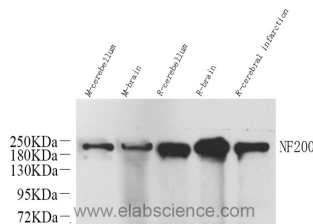
Description

Reactivity	Mouse,Rat
Immunogen	KLH conjugated Synthetic peptide corresponding to Mouse NF200
Host	Rabbit
Isotype	IgG
Purification	Affinity purification
Conjugation	Unconjugated
Buffer	PBS with 0.02% sodium azide, 1% protective protein and 50% glycerol, pH7.4

Applications Recommended Dilution

WB 1:500-1:2000

Data



Western Blot analysis of various samples using NEFH Polyclonal Antibody at dilution of 1:1000.

Observed Mw:200kDa
Calculated Mw:117kDa

Preparation & Storage

Storage Store at -20°C. Avoid freeze / thaw cycles.

Background

NEFH, also named as KIAA0845 and NFH, belongs to the intermediate filament family. It has an important function in mature axons that is not subserved by the two smaller NF proteins. Neurofilaments are the 10nm intermediate filaments found specifically in neurons. They are a major component of the cell's cytoskeleton, and provide support for normal axonal radial growth. Neurofilaments usually contain three intermediate filament proteins: L, M, and H which are involved in the maintenance of neuronal caliber. The names given to the three major neurofilament subunits are based upon the apparent molecular weight of the mammalian subunits on SDS-PAGE: NF-L, 65-68kd; NF-M, 145-160kd and NF-H, 200-220kd. This antibody recognizes NEFH only.

For Research Use Only