

CD284 Polyclonal Antibody

Catalog Number:E-AB-70079

Note: Centrifuge before opening to ensure complete recovery of vial contents.

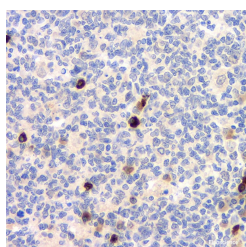
Description

Reactivity	Human,Rat
Immunogen	KLH conjugated Synthetic peptide corresponding to Mouse TLR4
Host	Rabbit
Isotype	IgG
Purification	Affinity purification
Conjugation	Unconjugated
Formulation	PBS with 0.02% sodium azide, 1% protective protein and 50% glycerol, pH7.4

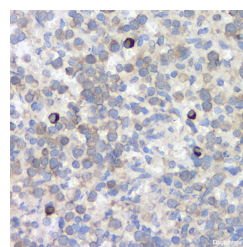
Applications Recommended Dilution

IHC	1:200-1:800
------------	-------------

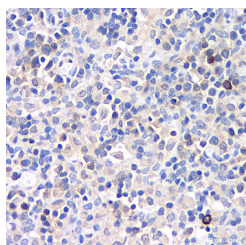
Data



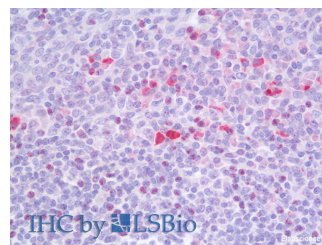
Immunohistochemistry analysis of paraffin-embedded human tonsil using CD284 Polyclonal Antibody at dilution of 1:500.



Immunohistochemistry analysis of paraffin-embedded rat spleen using CD284 Polyclonal Antibody at dilution of 1:500.



Immunohistochemistry analysis of paraffin-embedded rat lymph node using CD284 Polyclonal Antibody at dilution of 1:500.



Immunohistochemistry analysis of paraffin-embedded Human Tonsil using CD284 Polyclonal Antibody(Elabscience® Product Detected by Lifespan).

Preparation & Storage

Storage Store at -20°C. Avoid freeze / thaw cycles.

Background

TLR4,also named as CD284,belongs to the Toll-like receptor family. TLR4 cooperates with LY96 and CD14 to mediate the innate immune response to bacterial lipopolysaccharide (LPS). TLR4 acts via MYD88,TIRAP and TRAF6,leading to NF-kappa-B activation,cytokine secretion and the inflammatory response. Three alternatively spliced transcript variants that encode different protein isoforms have been described.

For Research Use Only

A Reliable Research Partner in Life Science and Medicine

Toll-free: 1-888-852-8623

Web: www.elabscience.com

Tel: 1-832-243-6086

Email: techsupport@elabscience.com

Fax: 1-832-243-6017