

# CK-19 Polyclonal Antibody

Catalog Number:E-AB-70083

2 Publications

**Note:** Centrifuge before opening to ensure complete recovery of vial contents.

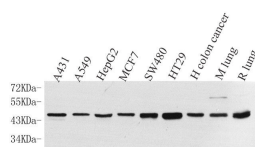
## Description

<b>Reactivity</b>	Human,Mouse,Rat
<b>Immunogen</b>	KLH conjugated Synthetic peptide corresponding to Mouse Cytokeratin 19
<b>Host</b>	Rabbit
<b>Isotype</b>	IgG
<b>Purification</b>	Affinity purification
<b>Conjugation</b>	Unconjugated
<b>Formulation</b>	PBS with 0.02% sodium azide, 1% protective protein and 50% glycerol, pH7.4

## Applications Recommended Dilution

<b>WB</b>	1:500-1:2000
<b>IHC</b>	1:200-1:800

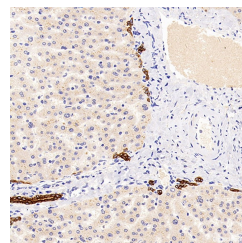
## Data



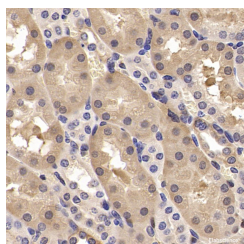
www.elabscience.com

Western Blot analysis of various samples using CK-19 Polyclonal Antibody at dilution of 1:1000.

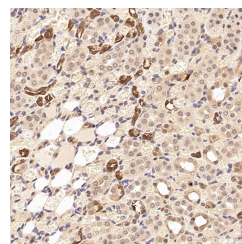
**Observed Mw:44kDa**  
**Calculated Mw:44kDa**



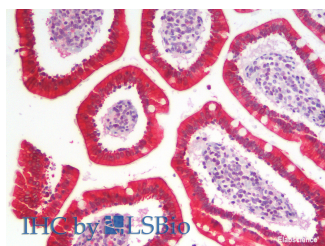
Immunohistochemistry analysis of paraffin-embedded human liver using CK-19 Polyclonal Antibody at dilution of 1:300.



Immunohistochemistry analysis of paraffin-embedded mouse kidney using CK-19 Polyclonal Antibody at dilution of 1:300.



Immunohistochemistry analysis of paraffin-embedded rat kidney using CK-19 Polyclonal Antibody at dilution of 1:300.



Immunohistochemistry analysis of paraffin-

## For Research Use Only

A Reliable Research Partner in Life Science and Medicine

Toll-free: 1-888-852-8623

Web: [www.elabscience.com](http://www.elabscience.com)

Tel: 1-832-243-6086

Email: [techsupport@elabscience.com](mailto:techsupport@elabscience.com)

Fax: 1-832-243-6017

# CK-19 Polyclonal Antibody

Catalog Number:E-AB-70083

2 Publications



embedded Human SmallIntestine using CK-19  
Polyclonal Antibody(Elabscience® Product Detected  
by Lifespan).

## Preparation & Storage

**Storage** Store at -20°C. Avoid freeze / thaw cycles.

## Background

The keratins are intermediate filament proteins responsible for the structural integrity of epithelial cells. KRT19,one of type I keratins,is specifically expressed in the periderm,the transiently superficial layer that envelopes the developing epidermis. Due to its high sensitivity,KRT19 is the most used marker for detection of tumor cells disseminated in lymph nodes,peripheral blood,and bone marrow of breast cancer patients. This antibody,generated against full length KRT19 protein,also recognizes KRT17,another type I keratin homologous to KRT19. KRT17 is used as a marker for trauma.

## For Research Use Only

A Reliable Research Partner in Life Science and Medicine

Toll-free: 1-888-852-8623

Web: [www.elabscience.com](http://www.elabscience.com)

Tel: 1-832-243-6086

Email: [techsupport@elabscience.com](mailto:techsupport@elabscience.com)

Fax: 1-832-243-6017