

## MPO Polyclonal Antibody

**Catalog No.** E-AB-70091

*Note:* Centrifuge before opening to ensure complete recovery of vial contents.

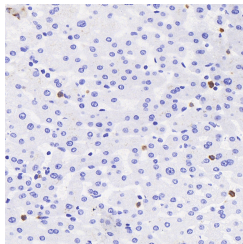
### Description

|                     |  |
|---------------------|--|
| <b>Reactivity</b>   | Human,Mouse,Rat  |
| <b>Immunogen</b>    | KLH conjugated Synthetic peptide corresponding to Mouse MPO                |
| <b>Host</b>         | Rabbit   |
| <b>Isotype</b>      | IgG  |
| <b>Purification</b> | Affinity purification  |
| <b>Conjugation</b>  | Unconjugated   |
| <b>Buffer</b>       | PBS with 0.02% sodium azide, 1% protective protein and 50% glycerol, pH7.4 |

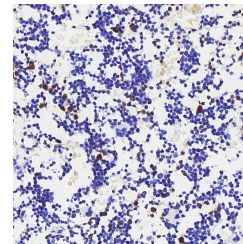
### Applications Recommended Dilution

|            |              |
|------------|--------------|
| <b>IHC</b> | 1:500-1:1000 |
| <b>IF</b>  | 1:200-1:500  |

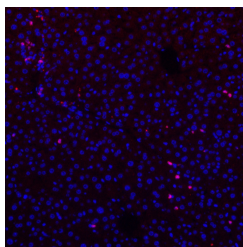
### Data



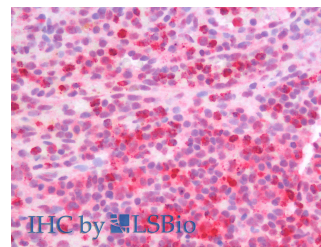
Immunohistochemistry analysis of paraffin-embedded human liver using MPO Polyclonal Antibody at dilution of 1:300.



Immunohistochemistry analysis of paraffin-embedded mouse bone using MPO Polyclonal Antibody at dilution of 1:300.



Immunofluorescence analysis of paraffin-embedded human liver using MPO Polyclonal Antibody at dilution of 1:300.



Immunohistochemistry analysis of paraffin-embedded Human Spleen using MPO Polyclonal Antibody(Elabscience® Product Detected by Lifespan).

### Preparation & Storage

**Storage** Store at -20°C. Avoid freeze / thaw cycles.

### For Research Use Only

## Background

Myeloperoxidase (MPO) is a heme protein synthesized during myeloid differentiation that constitutes the major component of neutrophil azurophilic granules. Produced as a single chain precursor, myeloperoxidase is subsequently cleaved into a light and heavy chain. The mature myeloperoxidase is a tetramer composed of 2 light chains and 2 heavy chains. This enzyme produces hypohalous acids central to the microbicidal activity of neutrophils.