

Connexin 43 Polyclonal Antibody

Catalog No. E-AB-70097

Note: Centrifuge before opening to ensure complete recovery of vial contents.

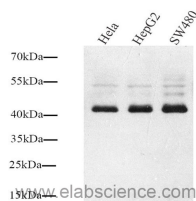
Description

Reactivity	Human, Mouse, Rat
Immunogen	KLH conjugated Synthetic peptide corresponding to Mouse Connexin 43
Host	Rabbit
Isotype	IgG
Purification	Affinity purification
Conjugation	Unconjugated
Buffer	PBS with 0.02% sodium azide, 1% protective protein and 50% glycerol, pH7.4

Applications Recommended Dilution

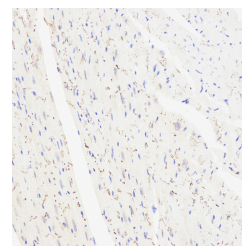
WB	1:1000-1:2000
IHC	1:300-1:800

Data

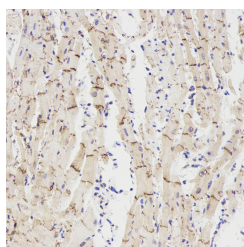


Western Blot analysis of various samples using Connexin 43 Polyclonal Antibody at dilution of 1:1000.

Observed Mw:43kDa
Calculated Mw:43kDa



Immunohistochemistry analysis of paraffin-embedded mouse heart using Connexin 43 Polyclonal Antibody at dilution of 1:300.



Immunohistochemistry analysis of paraffin-embedded rat heart using Connexin 43 Polyclonal Antibody at dilution of 1:300.

Preparation & Storage

For Research Use Only

Storage Store at -20°C. Avoid freeze / thaw cycles.

Background

This gene is a member of the connexin gene family. The encoded protein is a component of gap junctions, which are composed of arrays of intercellular channels that provide a route for the diffusion of low molecular weight materials from cell to cell. The encoded protein is the major protein of gap junctions in the heart that are thought to have a crucial role in the synchronized contraction of the heart and in embryonic development. A related intronless pseudogene has been mapped to chromosome 5. Mutations in this gene have been associated with oculodentodigital dysplasia, autosomal recessive craniometaphyseal dysplasia and heart malformations.