

SOX-2 Polyclonal Antibody

Catalog No. E-AB-70108

Note: Centrifuge before opening to ensure complete recovery of vial contents.

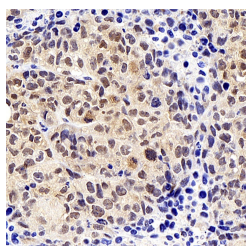
Description

| | |
|---------------------|--|
| Reactivity | Mouse,Rat |
| Immunogen | KLH conjugated Synthetic peptide corresponding to Mouse SOX2 |
| Host | Rabbit |
| Isotype | IgG |
| Purification | Affinity purification |
| Conjugation | Unconjugated |
| Buffer | PBS with 0.02% sodium azide, 1% protective protein and 50% glycerol, pH7.4 |

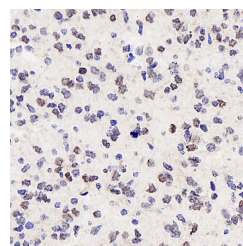
Applications Recommended Dilution

IHC 1:200-1:800

Data



Immunohistochemistry analysis of paraffin-embedded mice tumor with hela using SOX-2 Polyclonal Antibody at dilution of 1:300.



Immunohistochemistry analysis of paraffin-embedded fetal rat brain using SOX-2 Polyclonal Antibody at dilution of 1:300.

Preparation & Storage

Storage Store at -20°C. Avoid freeze / thaw cycles.

Background

Sox2, also known as SRY (sex determining region Y)-box 2, is a transcription factor essential for maintaining self-renewal of undifferentiated ES cells and is one of the key transcription factors used to reprogram mouse and human fibroblasts to a pluripotent state. Sox2 expressed in undifferentiated pluripotent stem cells and germ cells during development.

For Research Use Only