

COX4I1 Polyclonal Antibody

Catalog No. E-AB-70109

Note: Centrifuge before opening to ensure complete recovery of vial contents.

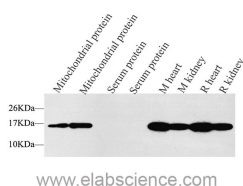
Description

Reactivity	Human, Mouse, Rat
Immunogen	Recombinant protein corresponding to Mouse COX IV
Host	Rabbit
Isotype	IgG
Purification	Affinity purification
Conjugation	Unconjugated
Buffer	PBS with 0.02% sodium azide, 1% protective protein and 50% glycerol, pH7.4

Applications Recommended Dilution

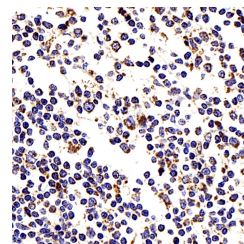
WB	1:500-1:2000
IHC	1:200-1:800
IF	1:200-1:500

Data

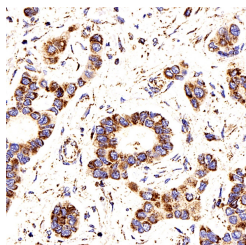


Western Blot analysis of various samples using COX4I1 Polyclonal Antibody at dilution of 1:1500.

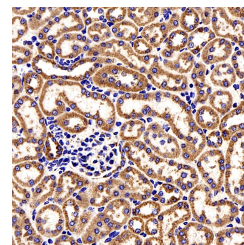
Observed Mw:16kDa
Calculated Mw:16kDa



Immunohistochemistry analysis of paraffin-embedded human tonsil using COX4I1 Polyclonal Antibody at dilution of 1:200.

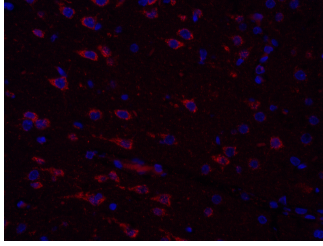


Immunohistochemistry analysis of paraffin-embedded human liver cancer using COX4I1 Polyclonal Antibody at dilution of 1:200.



Immunohistochemistry analysis of paraffin-embedded mouse kidney cancer using COX4I1 Polyclonal Antibody at dilution of 1:200.

For Research Use Only



Immunofluorescence analysis of paraffin-embedded
Rat brain using COX4I1 Polyclonal Antibody at
dilution of 1:300.

Preparation & Storage

Storage Store at -20°C. Avoid freeze / thaw cycles.

Background

COX4I1, also named as COX4 and COXIV-1, belongs to the cytochrome c oxidase IV family. It is one of the nuclear-coded polypeptide chains of cytochrome c oxidase, the terminal oxidase in mitochondrial electron transport. COX4I1 is a marker for mitochondria. It has two isoforms (isoform 1 and 2). Isoform 1 (COX4I1) is ubiquitously expressed and isoform 2 is highly expressed in lung tissues. COX4I1 is commonly used as a loading control. This antibody is specific to COX4I1 and does not cross-react with COX4I2.

For Research Use Only