

SNAI1 Polyclonal Antibody

Catalog Number:E-AB-70119



Note: Centrifuge before opening to ensure complete recovery of vial contents.

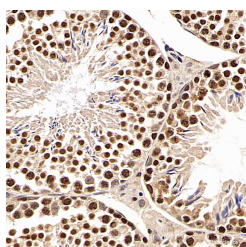
Description

Reactivity	Mouse,Rat
Immunogen	KLH conjugated Synthetic peptide corresponding to Mouse Snai1
Host	Rabbit
Isotype	IgG
Purification	Affinity purification
Conjugation	Unconjugated
Formulation	PBS with 0.02% sodium azide, 1% protective protein and 50% glycerol, pH7.4

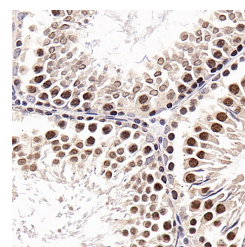
Applications Recommended Dilution

IHC	1:500-1:1000
------------	--------------

Data



Immunohistochemistry analysis of paraffin-embedded mouse testis using SNAI1 Polyclonal Antibody at dilution of 1:600.



Immunohistochemistry analysis of paraffin-embedded Rat testis using SNAI1 Polyclonal Antibody at dilution of 1:600.

Preparation & Storage

Storage Store at -20°C. Avoid freeze / thaw cycles.

Background

The Drosophila embryonic protein snail is a zinc finger transcriptional repressor which downregulates the expression of ectodermal genes within the mesoderm. The nuclear protein encoded by this gene is structurally similar to the Drosophila snail protein, and is also thought to be critical for mesoderm formation in the developing embryo. At least two variants of a similar processed pseudogene have been found on chromosome 2.

For Research Use Only

A Reliable Research Partner in Life Science and Medicine

Toll-free: 1-888-852-8623

Web: www.elabscience.com

Tel: 1-832-243-6086

Email: techsupport@elabscience.com

Fax: 1-832-243-6017