

ARG1 Polyclonal Antibody

Catalog Number:E-AB-70142



Note: Centrifuge before opening to ensure complete recovery of vial contents.

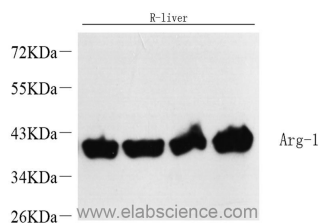
Description

Reactivity	Human,Mouse,Rat
Immunogen	Recombinant protein corresponding to Mouse Arginase-1
Host	Rabbit
Isotype	IgG
Purification	Affinity purification
Conjugation	Unconjugated
Formulation	PBS with 0.02% sodium azide, 1% protective protein and 50% glycerol, pH7.4

Applications Recommended Dilution

WB	1:2000-1:10000
-----------	----------------

Data



Western Blot analysis of various samples using ARG1 Polyclonal Antibody at dilution of 1:10000.

Observed Mw:40kDa
Calculated Mw:35kDa

Preparation & Storage

Storage Store at -20°C. Avoid freeze / thaw cycles.

Background

Liver arginase(Arginase-1) belongs to the arginase family. Hepatic arginase 1 is closely associated with alternative macrophage activation(PMID:12098359) and Arg1 has been shown to protect motor neurons from trophic factor deprivation and allow sensory neurons to overcome neurite outgrowth inhibition by myelin proteins(PMID: 20071539).It can exist as a homotrimer(PMID:16141327) and it has 3 isoforms produced by alternative splicing.Defects in ARG1 are the cause of argininemia (ARGIN).

For Research Use Only

A Reliable Research Partner in Life Science and Medicine

Toll-free: 1-888-852-8623

Web: www.elabscience.com

Tel: 1-832-243-6086

Email: techsupport@elabscience.com

Fax: 1-832-243-6017