

Glucocorticoid Receptor Polyclonal Antibody

Catalog No. E-AB-70157

Note: Centrifuge before opening to ensure complete recovery of vial contents.

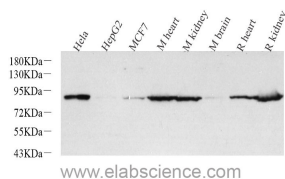
Description

Reactivity	Human, Mouse, Rat
Immunogen	Recombinant protein corresponding to Mouse Glucocorticoid receptor
Host	Rabbit
Isotype	IgG
Purification	Affinity purification
Conjugation	Unconjugated
Buffer	PBS with 0.02% sodium azide, 1% protective protein and 50% glycerol, pH7.4

Applications Recommended Dilution

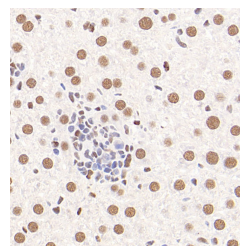
WB	1:500-1:1000
IHC	1:500-1:1000

Data

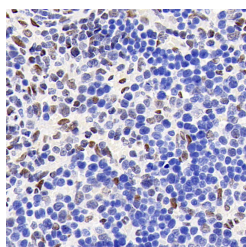


Western Blot analysis of various samples using Glucocorticoid Receptor Polyclonal Antibody at dilution of 1:1000.

Observed Mw:91kDa
Calculated Mw:91kDa



Immunohistochemistry analysis of paraffin-embedded mouse liver using Glucocorticoid Receptor Polyclonal Antibody at dilution of 1:1000.



Immunohistochemistry analysis of paraffin-embedded rat spleen using Glucocorticoid Receptor Polyclonal Antibody at dilution of 1:1000.

Preparation & Storage

For Research Use Only

Storage Store at -20°C. Avoid freeze / thaw cycles.

Background

This gene encodes glucocorticoid receptor, which can function both as a transcription factor that binds to glucocorticoid response elements in the promoters of glucocorticoid responsive genes to activate their transcription, and as a regulator of other transcription factors. This receptor is typically found in the cytoplasm, but upon ligand binding, is transported into the nucleus. It is involved in inflammatory responses, cellular proliferation, and differentiation in target tissues. Mutations in this gene are associated with generalized glucocorticoid resistance. Alternative splicing of this gene results in transcript variants encoding either the same or different isoforms.