

DLL4 Polyclonal Antibody

Catalog No. E-AB-70190

Note: Centrifuge before opening to ensure complete recovery of vial contents.

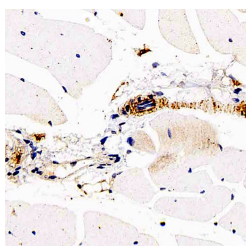
Description

Reactivity	Mouse,Rat
Immunogen	KLH conjugated Synthetic peptide corresponding to Mouse DLL4
Host	Rabbit
Isotype	IgG
Purification	Affinity purification
Conjugation	Unconjugated
Buffer	PBS with 0.02% sodium azide, 1% protective protein and 50% glycerol, pH7.4

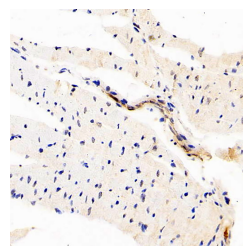
Applications Recommended Dilution

IHC 1:200-1:500

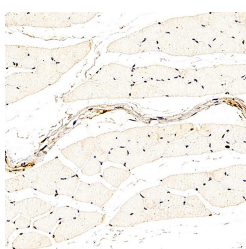
Data



Immunohistochemistry analysis of paraffin-embedded mouse skeletal muscle using DLL4 Polyclonal Antibody at dilution of 1:200.



Immunohistochemistry analysis of paraffin-embedded rat heart using DLL4 Polyclonal Antibody at dilution of 1:200.



Immunohistochemistry analysis of paraffin-embedded rat skeletal muscle using DLL4 Polyclonal Antibody at dilution of 1:200.

Preparation & Storage

Storage Store at -20°C. Avoid freeze / thaw cycles.

Background

This gene is a homolog of the Drosophila delta gene. The delta gene family encodes Notch ligands that are characterized

For Research Use Only

by a DSL domain, EGF repeats, and a transmembrane domain.