

CD192 Polyclonal Antibody

Catalog No. E-AB-70194

Note: Centrifuge before opening to ensure complete recovery of vial contents.

Description

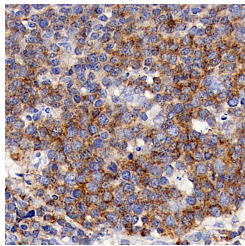
| | |
|---------------------|--|
| Reactivity | Human,Mouse,Rat |
| Immunogen | KLH conjugated Synthetic peptide corresponding to Mouse CCR2 |
| Host | Rabbit |
| Isotype | IgG |
| Purification | Affinity purification |
| Conjugation | Unconjugated |
| Buffer | PBS with 0.02% sodium azide, 1% protective protein and 50% glycerol, pH7.4 |

Applications

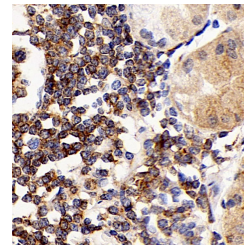
Recommended Dilution

IHC 1:300-1:1000

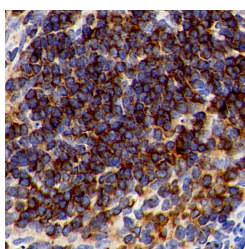
Data



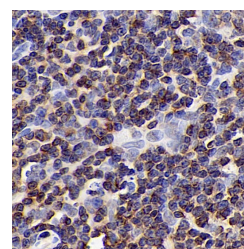
Immunohistochemistry analysis of paraffin-embedded human tonsil using CD192 Polyclonal Antibody at dilution of 1:300.



Immunohistochemistry analysis of paraffin-embedded human stomach cancer using CD192 Polyclonal Antibody at dilution of 1:300.



Immunohistochemistry analysis of paraffin-embedded Mouse spleen using CD192 Polyclonal Antibody at dilution of 1:300.



Immunohistochemistry analysis of paraffin-embedded rat lymph node using CD192 Polyclonal Antibody at dilution of 1:300.

Preparation & Storage

Storage Store at -20°C. Avoid freeze / thaw cycles.

Background

This gene encodes two isoforms of a receptor for monocyte chemoattractant protein-1, a chemokine which specifically

For Research Use Only

mediates monocyte chemotaxis. Monocyte chemoattractant protein-1 is involved in monocyte infiltration in inflammatory diseases such as rheumatoid arthritis as well as in the inflammatory response against tumors. The receptors encoded by this gene mediate agonist-dependent calcium mobilization and inhibition of adenylyl cyclase. This gene is located in the chemokine receptor gene cluster region. Two alternatively spliced transcript variants are expressed by the gene.