

## COL2A1 Polyclonal Antibody

Catalog No. E-AB-70208

**Note:** Centrifuge before opening to ensure complete recovery of vial contents.

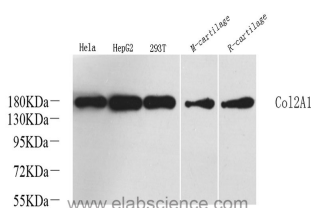
### Description

<b>Reactivity</b>	Human, Mouse, Rat
<b>Immunogen</b>	Recombinant protein corresponding to Mouse COL2A1
<b>Host</b>	Rabbit
<b>Isotype</b>	IgG
<b>Purification</b>	Affinity purification
<b>Conjugation</b>	Unconjugated
<b>Buffer</b>	PBS with 0.02% sodium azide, 1% BSA and 50% glycerol, pH7.4

### Applications Recommended Dilution

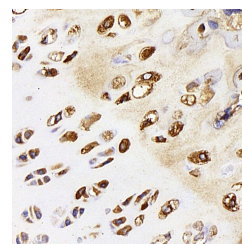
**WB 1:500-1:2000,**  
**IHC 1:100-1:500, IF**  
**1:100-1:500**

### Data

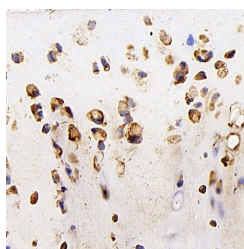


Western Blot analysis of various samples using COL2A1 Polyclonal Antibody at dilution of 1:1000.

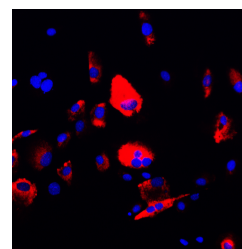
**Observed Mw:180kDa**  
**Calculated Mw:142kDa**



Immunohistochemistry analysis of paraffin-embedded mouse cartilage using COL2A1 Polyclonal Antibody at dilution of 1:200.



Immunohistochemistry analysis of paraffin-embedded rat cartilage using COL2A1 Polyclonal Antibody at dilution of 1:200.



Immunofluorescence analysis of 3T3 cells using COL2A1 Polyclonal Antibody at dilution of 1:200.

### Preparation & Storage

**Storage** Store at -20°C. Avoid freeze / thaw cycles.

### For Research Use Only

## Background

This gene encodes the alpha-1 chain of type II collagen, a fibrillar collagen found in cartilage and the vitreous humor of the eye. Mutations in this gene are associated with achondrogenesis, chondrodysplasia, early onset familial osteoarthritis, SED congenita, Langer-Saldino achondrogenesis, Kniest dysplasia, Stickler syndrome type I, and spondyloepimetaphyseal dysplasia Strudwick type. In addition, defects in processing chondrocalcin, a calcium binding protein that is the C-propeptide of this collagen molecule, are also associated with chondrodysplasia. There are two transcripts identified for this gene.