

NTS Polyclonal Antibody

Catalog No. E-AB-70214

Note: Centrifuge before opening to ensure complete recovery of vial contents.

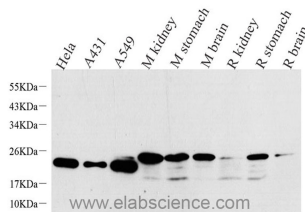
Description

Reactivity	Human, Mouse, Rat
Immunogen	KLH conjugated Synthetic peptide corresponding to Mouse Neurotensin
Host	Rabbit
Isotype	IgG
Purification	Affinity purification
Conjugation	Unconjugated
Buffer	PBS with 0.02% sodium azide, 1% protective protein and 50% glycerol, pH7.4

Applications Recommended Dilution

WB	1:500-1:2000
IHC	1:300-1:800

Data

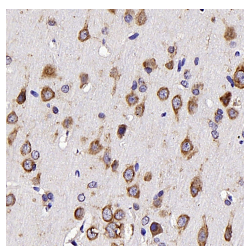


Western Blot analysis of various samples using NTS Polyclonal Antibody at dilution of 1:1000.

Observed Mw:20kDa
Calculated Mw:20kDa



Immunohistochemistry analysis of paraffin-embedded mouse brain using NTS Polyclonal Antibody at dilution of 1:300.



Immunohistochemistry analysis of paraffin-embedded rat brain using NTS Polyclonal Antibody at dilution of 1:300.

Preparation & Storage

Storage Store at -20°C. Avoid freeze / thaw cycles.

For Research Use Only

Background

This gene encodes a common precursor for two peptides, neuromedin N and neurotensin. Neurotensin is a secreted tridecapeptide, which is widely distributed throughout the central nervous system, and may function as a neurotransmitter or a neuromodulator. It may be involved in dopamine-associated pathophysiological events, in the maintenance of gut structure and function, and in the regulation of fat metabolism. Tissue-specific processing may lead to the formation in some tissues of larger forms of neuromedin N and neurotensin. The large forms may represent more stable peptides that are also biologically active.

For Research Use Only