

LXR alpha Polyclonal Antibody

Catalog No. E-AB-70218

Note: Centrifuge before opening to ensure complete recovery of vial contents.

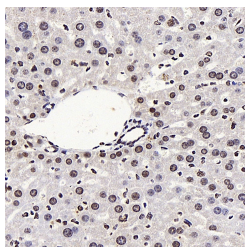
Description

Reactivity	Mouse,Rat
Immunogen	KLH conjugated Synthetic peptide corresponding to Mouse LXRA
Host	Rabbit
Isotype	IgG
Purification	Affinity purification
Conjugation	Unconjugated
Buffer	PBS with 0.02% sodium azide, 1% protective protein and 50% glycerol, pH7.4

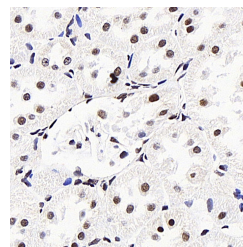
Applications Recommended Dilution

IHC 1:400-1:1500

Data



Immunohistochemistry analysis of paraffin-embedded mouse liver using LXR alpha Polyclonal Antibody at dilution of 1:400.



Immunohistochemistry analysis of paraffin-embedded rat kidney using LXR alpha Polyclonal Antibody at dilution of 1:400.

Preparation & Storage

Storage Store at -20°C. Avoid freeze / thaw cycles.

Background

NR1H3, also known as LXRA, is a liver X receptor, which forms a subfamily of the nuclear receptor superfamily and are key regulators of macrophage function, controlling transcriptional programs involved in lipid homeostasis and inflammation. It is also a ligand-activated LXR and forms heterodimers with retinoid X receptor, then participates in regulating expression of target genes containing LXR response elements.

For Research Use Only