

NRF1 Polyclonal Antibody

Catalog No. E-AB-70219

Note: Centrifuge before opening to ensure complete recovery of vial contents.

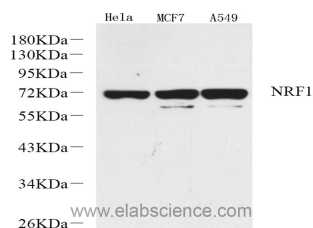
Description

Reactivity	Human
Immunogen	KLH conjugated Synthetic peptide corresponding to Mouse NRF1
Host	Rabbit
Isotype	IgG
Purification	Affinity purification
Conjugation	Unconjugated
Buffer	PBS with 0.02% sodium azide, 1% protective protein and 50% glycerol, pH7.4

Applications Recommended Dilution

WB 1:500-1:2000

Data



Western Blot analysis of various samples using NRF1 Polyclonal Antibody at dilution of 1:1000.

Observed Mw:68kDa
Calculated Mw:54/68kDa

Preparation & Storage

Storage Store at -20°C. Avoid freeze / thaw cycles.

Background

This gene encodes a protein that homodimerizes and functions as a transcription factor which activates the expression of some key metabolic genes regulating cellular growth and nuclear genes required for respiration, heme biosynthesis, and mitochondrial DNA transcription and replication. The protein has also been associated with the regulation of neurite outgrowth. Alternative splicing results in multiple transcript variants.

For Research Use Only