

## Catenin beta Monoclonal Antibody

Catalog No. E-AB-70230

**Note:** Centrifuge before opening to ensure complete recovery of vial contents.

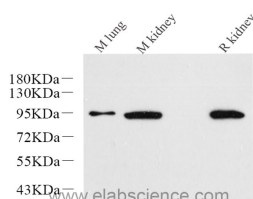
### Description

<b>Reactivity</b>	Human,Mouse,Rat
<b>Immunogen</b>	Recombinant protein corresponding to Mouse $\beta$ -catenin
<b>Host</b>	Mouse
<b>Isotype</b>	IgG
<b>Clone</b>	4A3H3
<b>Purification</b>	Affinity purification
<b>Conjugation</b>	Unconjugated
<b>Buffer</b>	PBS with 0.02% sodium azide, 1% protective protein and 50% glycerol, pH7.4

### Applications Recommended Dilution

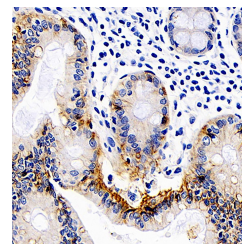
<b>WB</b>	1:500-1:1000
<b>IHC</b>	1:100-1:500

### Data

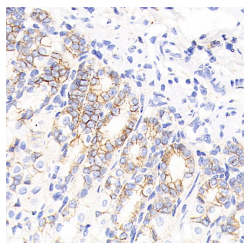


Western Blot analysis of various samples using Catenin beta Monoclonal Antibody at dilution of 1:1000.

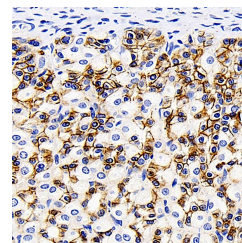
**Observed Mw:92kDa**  
**Calculated Mw:92kDa**



Immunohistochemistry analysis of paraffin-embedded Human colon using Catenin beta Monoclonal Antibody at dilution of 1:200.



Immunohistochemistry analysis of paraffin-embedded mouse stomach using Catenin beta Monoclonal Antibody at dilution of 1:200.



Immunohistochemistry analysis of paraffin-embedded Rat stomach using Catenin beta Monoclonal Antibody at dilution of 1:200.

### For Research Use Only

## Preparation & Storage

**Storage**                      Store at -20°C. Avoid freeze / thaw cycles.

## Background

CTNNB1, also known as  $\beta$ -Catenin, is an evolutionarily conserved, multifunctional intracellular protein. CTNNB1 was originally identified in cell adherens junctions (AJs) where it functions to bridge the cytoplasmic domain of cadherins to  $\alpha$ -catenin and the actin cytoskeleton. Besides its essential role in the AJs, CTNNB1 is also a key downstream component of the canonical Wnt pathway that plays diverse and critical roles in embryonic development and adult tissue homeostasis. Deregulation of CTNNB1 activity is associated with multiple diseases including cancers. .

## For Research Use Only