

VCAM1 Polyclonal Antibody

Catalog Number:E-AB-70284



Note: Centrifuge before opening to ensure complete recovery of vial contents.

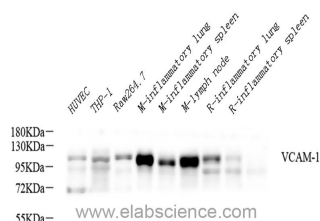
Description

Reactivity	Human,Mouse,Rat
Immunogen	Recombinant protein corresponding to Mouse VCAM-1
Host	Rabbit
Isotype	IgG
Purification	Affinity purification
Conjugation	Unconjugated
Formulation	PBS with 0.02% sodium azide, 1% protective protein and 50% glycerol, pH7.4

Applications Recommended Dilution

WB	1:500-1:2000
-----------	--------------

Data



Western Blot analysis of various samples using VCAM1 Polyclonal Antibody at dilution of 1:600.

Observed Mw:100-110kDa

Calculated Mw:100-110kDa

Preparation & Storage

Storage Store at -20°C. Avoid freeze / thaw cycles.

Background

Vascular cell adhesion molecule 1 (VCAM1),also known as CD106,is a transmembrane glycoprotein belonging to the immunoglobulin gene superfamily. VCAM1 is expressed by cytokine-activated endothelium,interacts with integrin VLA4 ($\alpha 4\beta 1$) present on the surface of leukocytes,and mediates both adhesion and signal transduction. It is also expressed either constitutively or inducibly in a variety of other cell types,including vascular smooth muscle cells,differentiating skeletal muscle cells,renal and neural epithelial cells,macrophages (Kupffer cells),dendritic cells,and bone marrow stromal cells .

For Research Use Only

A Reliable Research Partner in Life Science and Medicine

Toll-free: 1-888-852-8623

Web: www.elabscience.com

Tel: 1-832-243-6086

Email: techsupport@elabscience.com

Fax: 1-832-243-6017