

# CK-7 Monoclonal Antibody

Catalog Number:E-AB-70293

**Note:** Centrifuge before opening to ensure complete recovery of vial contents.

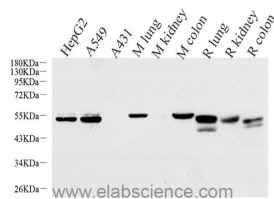
## Description

<b>Reactivity</b>	Human,Mouse,Rat
<b>Immunogen</b>	Recombinant protein corresponding to Mouse Cytokeratin 7
<b>Host</b>	Mouse
<b>Isotype</b>	IgG
<b>Clone</b>	7D8G8
<b>Purification</b>	Affinity purification
<b>Conjugation</b>	Unconjugated
<b>Formulation</b>	PBS with 0.02% sodium azide, 1% protective protein and 50% glycerol, pH7.4

## Applications Recommended Dilution

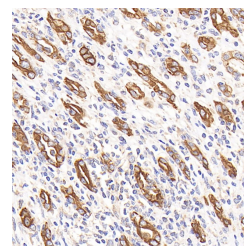
<b>WB</b>	1:500-1:2000
<b>IHC</b>	1:100-1:500

## Data

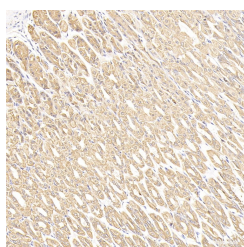


Western Blot analysis of various samples using CK-7 Monoclonal Antibody at dilution of 1:1000.

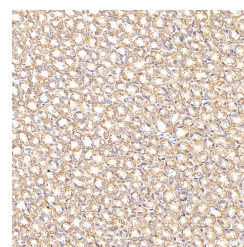
**Observed Mw:51kDa**  
**Calculated Mw:51kDa**



Immunohistochemistry analysis of paraffin-embedded human stomach cancer using CK-7 Monoclonal Antibody at dilution of 1:300.



Immunohistochemistry analysis of paraffin-embedded mouse stomach cancer using CK-7 Monoclonal Antibody at dilution of 1:300.



Immunohistochemistry analysis of paraffin-embedded Rat stomach cancer using CK-7 Monoclonal Antibody at dilution of 1:300.

## Preparation & Storage

**Storage** Store at -20°C. Avoid freeze / thaw cycles.

## Background

Keratins are a large family of proteins that form the intermediate filament cytoskeleton of epithelial cells, which are

## For Research Use Only

A Reliable Research Partner in Life Science and Medicine

Toll-free: 1-888-852-8623

Web: [www.elabscience.com](http://www.elabscience.com)

Tel: 1-832-243-6086

Email: [techsupport@elabscience.com](mailto:techsupport@elabscience.com)

Fax: 1-832-243-6017

# CK-7 Monoclonal Antibody

Catalog Number:E-AB-70293



classified into two major sequence types. Type I keratins are a group of acidic intermediate filament proteins,including K9–K23,and the hair keratins Ha1–Ha8. Type II keratins are the basic or neutral counterparts to the acidic type I keratins,including K1–K8,and the hair keratins,Hb1–Hb6. KRT7,also named as cytokeratin 7,is one member of type II basic cytokeratin. It is specifically expressed in the simple epithelia lining the cavities of the internal organs and in the gland ducts and blood vessels,and their neoplasms. KRT7 is marker of epithelial tissues,but not present in carcinomas of stratified squamous cell origin.This antibody is specifically against KRT7.

---

## For Research Use Only

A Reliable Research Partner in Life Science and Medicine

Toll-free: 1-888-852-8623

Web: [www.elabscience.com](http://www.elabscience.com)

Tel: 1-832-243-6086

Email: [techsupport@elabscience.com](mailto:techsupport@elabscience.com)

Fax: 1-832-243-6017