

CASP1 Polyclonal Antibody

Catalog No. E-AB-70300

Note: Centrifuge before opening to ensure complete recovery of vial contents.

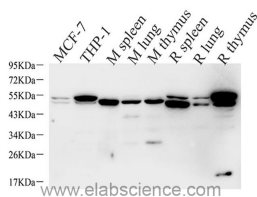
Description

Reactivity	Human, Mouse, Rat
Immunogen	Recombinant protein corresponding to Mouse Caspase 1
Host	Rabbit
Isotype	IgG
Purification	Affinity purification
Conjugation	Unconjugated
Buffer	PBS with 0.02% sodium azide, 1% protective protein and 50% glycerol, pH7.4

Applications Recommended Dilution

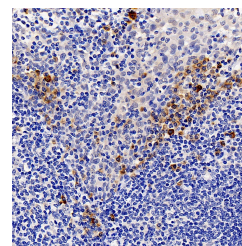
WB	1:500-1:2000
IHC	1:300-1:800

Data

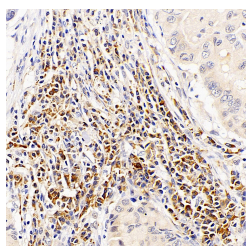


Western Blot analysis of various samples using CASP1 Polyclonal Antibody at dilution of 1:1000.

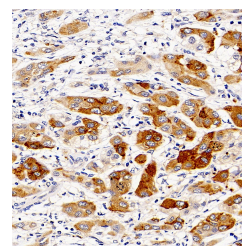
Observed Mw:45-47kDa,30kDa,35kDa
Calculated Mw:45kDa



Immunohistochemistry analysis of paraffin-embedded human tonsil using CASP1 Polyclonal Antibody at dilution of 1:300.



Immunohistochemistry analysis of paraffin-embedded human lung cancer using CASP1 Polyclonal Antibody at dilution of 1:300.



Immunohistochemistry analysis of paraffin-embedded human liver cancer using CASP1 Polyclonal Antibody at dilution of 1:300.

Preparation & Storage

Storage Store at -20°C. Avoid freeze / thaw cycles.

For Research Use Only

Background

This gene encodes a protein which is a member of the cysteine-aspartic acid protease (caspase) family. Sequential activation of caspases plays a central role in the execution-phase of cell apoptosis. Caspases exist as inactive proenzymes which undergo proteolytic processing at conserved aspartic residues to produce 2 subunits, large and small, that dimerize to form the active enzyme. This gene was identified by its ability to proteolytically cleave and activate the inactive precursor of interleukin-1, a cytokine involved in the processes such as inflammation, septic shock, and wound healing. This gene has been shown to induce cell apoptosis and may function in various developmental stages. Studies of a similar gene in mouse suggest a role in the pathogenesis of Huntington disease. Alternative splicing results in transcript variants encoding distinct isoforms.

For Research Use Only